



INTERNATIONAL SERVICE CENTER

- | | | | |
|--------------------------|---|------------------|---|
| Cairo, Egypt |  | New Delhi, India |  |
| Koln, Germany |  | Madrid, Spain |  |
| Kyeongki-Do, South Korea |  | Moscow, Russia |  |



Официальный дистрибьютор Wenzhou Zhengbang Electronic Equipment Co., Ltd. в России ООО "Абсолют электроника"

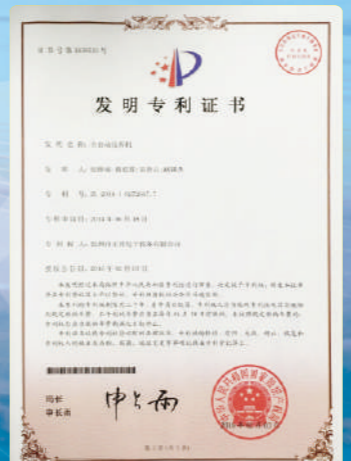
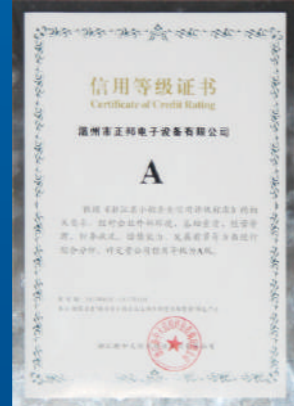
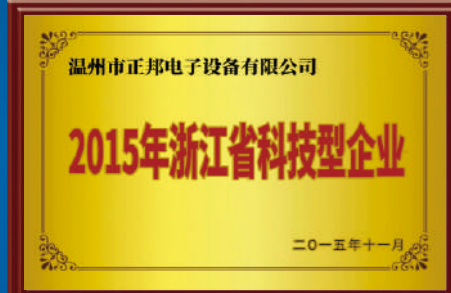
Add: office 320, Leninsky prospect, Saint-Petersburg, Russia
 Tel: +7 495-308-00-00 +7 812-380-95-98
 Website : www.absolutelectronica.ru



SPECIALTY, SERVICE, UNITE, DEDICATE



Honor and Patent



QUALITY IS LIFE



Introduction

Zhejiang Huaqi Zhengbang Automation Technology CO., Ltd. (Wenzhou Zhengbang Electrical Equipment CO., Ltd.) is founded in 2007, focusing on developing, design, manufacturing and sales automatic manufacturing devices and electronic production equipment. The company supplies professional and individual solutions for LED lighting, electronic, electrical products, toys, metal, cars. Major products are LED lighting automatic assembly lines, THT soldering device, SMT soldering machines and multiple working tables and non-standard equipment. Major products are LED bulb automatic assembly lines, flood lights assembly lines, downlights assembly lines, THT soldering equipment, SMT soldering device, working table and non-standard customized machines. Huaqi Zhengbang has big scale market covering 30+ province and districts inside of china and 30% products are selling to Hongkong, Taiwan, Southeast Asia, Africa, Europe, and America.

Huaqi Zhengbang believes "Qualified Base, Market Leading, Technical Development, Profitable Management" company role in order to improve core competitiveness, providing qualified service to most clients with "Qualified Products, Reasonable Pricing, Excellent Reputation and full range after-sale service".

COMPANY VISION: Contributing to create Chinese first brand in electronic and electrical production equipment.



Directory

Soldering Station



- 01~04 *Anti Static Constant Temperature Welding Table*
- 05~06 *High Frequency ESD Soldering Station*
- 07~08 *Hot Air Soldering Rework Station*
- 09~10 *2 IN 1 Hot Air Soldering Rework Station*
- 11~12 *2 IN 1 Desoldering Station*
- 13~14 *Anti-Static Desoldering Station*
- 19~20 *SMD Rework Soldering Station*
- 21~24 *Automatic Soldering Machine*

Soldering Iron



- 25~26 *Anti-Static Soldering Iron*
- 27 *Electric Soldering Iron*
- 28 *Intelligent Digital Display Soldering Iron*
- 29~40 *High Power Electric Soldering Iron*
- 41~42 *High Power Wooden Handle Soldering Iron*
- 43~44 *Temperature-Controlled Electric Soldering Iron*
- 45~46 *External Heat Soldering Iron*

Electric Screwdriver



- 47~48 *Seiko Type Electric Screwdriver*
- 49~50 *Fully Automatic Electric Screwdriver*
- 51~52 *High Speed Electric Screwdriver*
- 53~54 *Straight Insert Electric Screwdriver*
- 55~56 *Brushless Electric Screwdriver*
- 57~62 *Wireless Electric Screwdriver*
- 63~64 *Electric Screwdriver*

Solder Sucker



- 65~66 *All Aluminum Solder Sucker*
- 67~70 *High Strength Manual Solder Sucker*
- 71~76 *Electric Solder Sucker*
- 77~80 *Industrial Grade Anti-Static Tweezers*

Tool Pliers



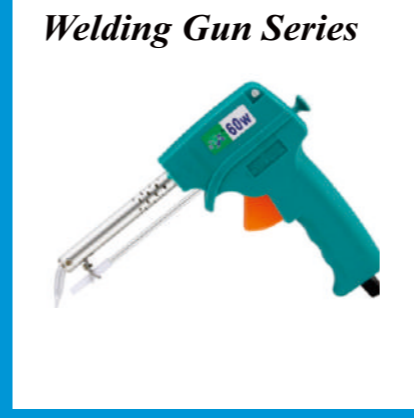
- 81~82 *Multi-Function Duck Beak Wire Stripper*
- 83~84 *Multi-Function Automatic Wire Stripper*
- 85~86 *Multi-Function Wire Stripper*
- 87~90 *Mini Electronic Pliers*
- 91~92 *Industrial grade multifunctional pliers*

Tin Wire



- 93~94 *Tin Wire*

Welding Gun Series



- 95~102 *Welding Gun Series*

Soldering Iron Stand



- 103~104 *Soldering Iron Stand*
- 105~106 *Cleaning tools*



ZB-SS-936



ZB-SS-936D

PRODUCT INTRODUCTION

A reliable soldering station with advanced functions, and a series of assistive features. We engineered and built the station with quality components so you can enjoy quick heating with stable temperature performance.

PRODUCT DETAILS



Easy to Use



Metal Soldering Iron Rack



More Efficient Cleaning



Pure Copper Ring Transformer



High Quality PVC Wire

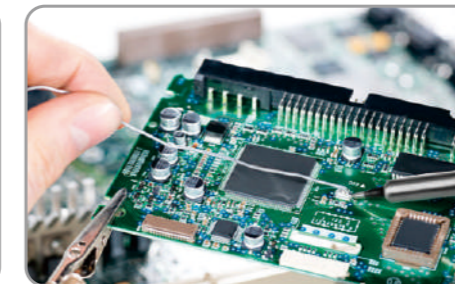


Accessories Included

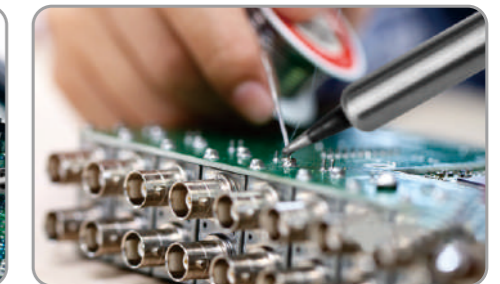
APPLICATION SCOPE



Cellphone Repairs





Electronic DIY Maintenance



Production Line Operation

PRODUCT PARAMETERS

Technical Data		
Product Image		
Model	HB-SS-936	HB-SS-936D
Display	Dial	Display Screen
Input Voltage	AC220V 50Hz	
Voltage	DC12-28V	
Power	70W	
Temp Range	200-500°C	



ZB-SS-936A

ZB-SS-936B



ZB-SS-938A

PRODUCT INTRODUCTION

When you get the 936 Soldering Station, you can look forward to:
 Solidly-Built Powerful Soldering Station: the 936 Soldering System is made for those who solder regularly. This station comes with high power performance, flexible temperature from 200°C to 500°C, faster heating up, enhanced temperature stabilization and enhanced performance. This is ideal for professional soldering, industrial & manufacturing, precision electronics, school labs, household & hobby uses, electronic DIYs & repair, etc.

PRODUCT DETAILS



Easy to Use



Esd Soldering Iron Rack



More Efficient Cleaning



3C Factory Certification



High Quality Handle

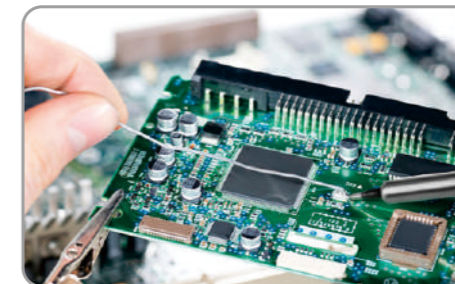


Accessories Included

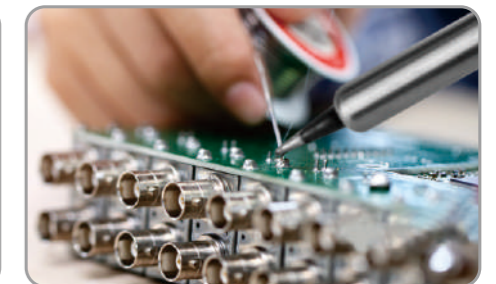
APPLICATION SCOPE



Cellphone Repairs



Electronic DIY Maintenance



Production Line Operation

PRODUCT PARAMETERS

Model	ZB-SS-936A	ZB-SS-936B	ZB-SS-938A (Digital Display)
Temp Range	200°C~500°C	200°C~480°C	200°C~500°C
Control Mode	Knob Temperature Regulation	Knob Temperature Regulation	Key temperature regulation
Display Mode	Dial	Dial	Display Screen
Wire Material	Silica Gel Line	PVC wire	Silica Gel Line
Welding Head	Cu + Cr Plating (Black)	Alloy	Cu + Cr Plating (Black)
Input Voltage	AC220V±10% 50Hz		
Output Voltage	24V		
Power	60W		
Size	140*110*90mm		



ZB-SS-203H



ZB-SS-205H

PRODUCT INTRODUCTION

Solidly-Built Powerful Soldering Station: This station comes with high power performance, flexible temperature from 100°C to 600°C, high frequency eddy current heating technology, strong power, rapid temperature recovery, effectively improve welding efficiency.

PRODUCT DETAILS



Easy to Use



Esd Soldering Iron Rack



More Efficient Cleaning



3C Factory Certification

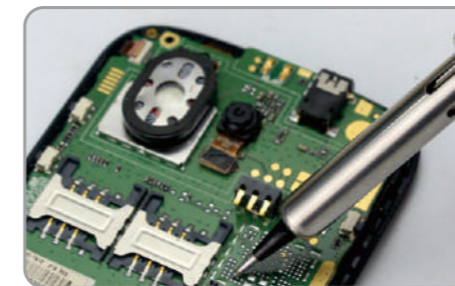


The Line is About 1.8m Long

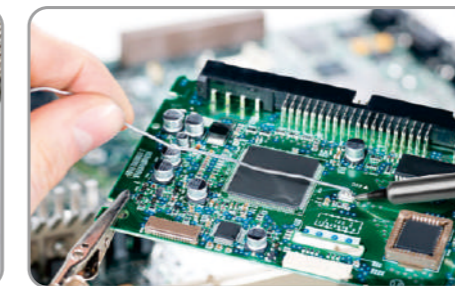


Essential Tools Included

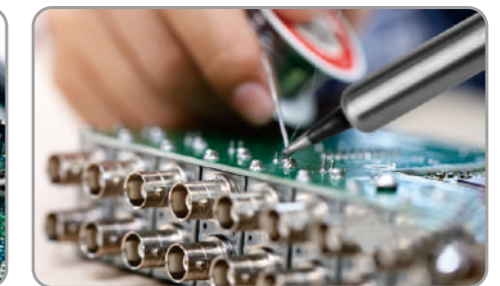
APPLICATION SCOPE



Cellphone Repairs



Electronic DIY Maintenance



Production Line Operation

PRODUCT PARAMETERS

Model	ZB-SS-203H	ZB-SS-205H
Power	90W	150W
Shell Material	Aluminum Alloy	
Input Voltage	36V, 400KHz	
Temp Range	100~600°C	
Display	LED Display Screen	
Weight	2kg	3kg



ZB-SS-850



ZB-SS-850D

PRODUCT INTRODUCTION

The 850 is specifically designed for operations on smaller devices such as mobile phones, remotes, and other devices similar in size. The station is equipped with a high performance hot air gun. This would be your ideal choice of station if you're dealing with boards and components in mobile-phone sizes on a regular basis.

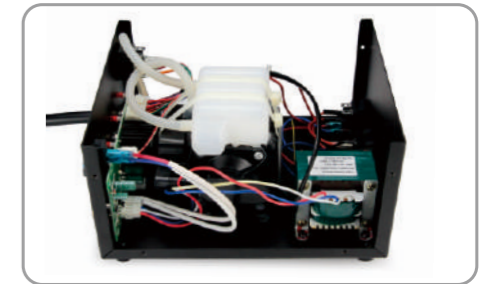
PRODUCT DETAILS



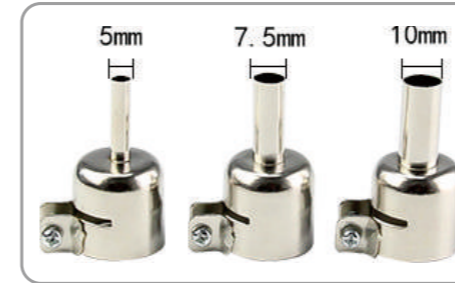
Easy to Use



Hot Air Gun



Intelligent control panel



HSS Heat Gun Nozzles



Nickel Chrome Wire Heater

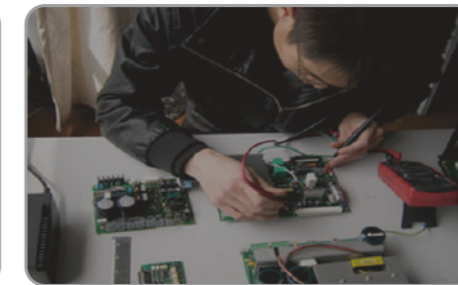


Spare Fuse

APPLICATION SCOPE



Assembly Line



Maintenance Equipment



Circuit Research and Development

PRODUCT PARAMETERS

Model	ZB-SS-850	ZB-SS-850D
Display	Dial	Display Screen
Voltage	AC220V 50HZ	
Power	700W	
Air Volume	24L/min	
Temperature Range	100~480°C	
Size	247mm*160mm*138mm	
Weight	3.2kg	



ZB-SS-8502



ZB-SS-8502D

PRODUCT INTRODUCTION

The 8502 is specifically designed for operations on smaller devices such as mobile phones, remotes, and other devices similar in size. The station is equipped with a 60W soldering iron and a high performance hot air gun for you to carry out precision works on components. This would be your ideal choice of station if you're dealing with boards and components in mobile-phone sizes on a regular basis.

PRODUCT DETAILS



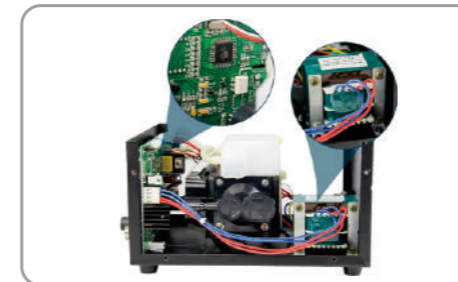
Easy to Use



Hot Air Gun



High Quality Handle



Intelligent Control Panel



HSS Heat Gun Nozzles



Nickel Chrome Wire Heater

APPLICATION SCOPE



Assembly Line



Maintenance Equipment



Circuit Research and Development

PRODUCT PARAMETERS

Model	ZB-SS-8502	ZB-SS-8502D
Display	Dial	Display Screen
Voltage	AC220V 50HZ	
Power	700W	
Air Volume	24L/min	
Temperature Range	100~480°C	
Soldering Iron Power	60W	
Size	237mm*185mm*138mm	
Weight	4.6kg	



GD-868D



GD-868



GD-868A

Product Name	2 In 1 Desoldering Station		
Model	868	868A	868D
Voltage	AC 220V 50/60HZ		
Hot Air Gun Function			
Air Gun Power	450W		
Airflow	120L/MIN		
Tem Control Range	100-450°C		
Display Mode	Analog	LED Display	
Soldering Station Function			
Output Voltage	DC24V		
Power	50W		
Tem range	200~480°C		
Display Mode	Analog	LED Display	

KEY POSITION

2-In-1 Desoldering Station



PRODUCT PACKAGING





958D

958

968D



968

8586D

It has a wide range of applications

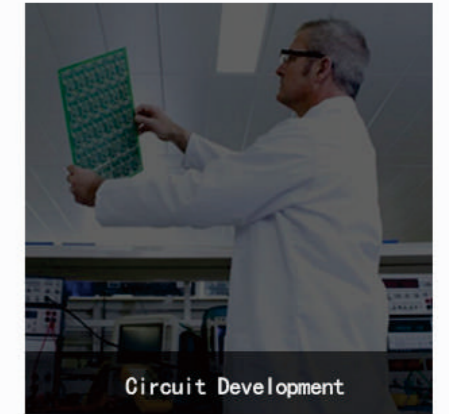
Commonly used in electronic welding process



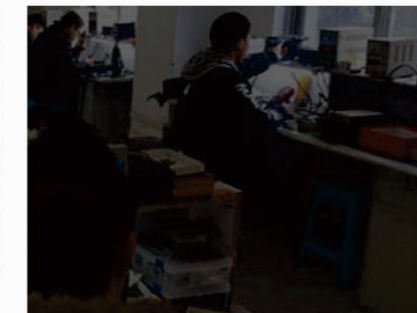
The assembly line of the workshop



Repair shop



Circuit Development



TECHNICAL PARAMETERS



MODEL NAME	ANTI-STATIC DESOLDERING STATION	ANTI-STATIC DESOLDERING STATIO
MODELS	GD958	GD958D (SINGLE DIGITAL DISPLAY)
RATED VOLTAGE	AC220V 50HZ	220V/50HZ 220V/60HZ
POWER	450W	
AIR PUMP TYPE	BRUSHLESS FAN SOFT AIR	
BLOWING RATE	120L/MIN	120L/MIN (NO SCALE ADJUSTABLE)
TEMPERATURE	100-450°C	
NOISE	<45db	
DISPLAY MODE	LED DIGITAL DISPLAY	





952A



952

952-A



Hot air table	Parameters	Soldering station	Parameters
Voltage	AC220V	Power	60W
Power	270W	Voltage	AC24V
Display Mode	Analog	Heating element	Ceramic heating core
Temperature range	100-450°C	Temperature range	200-480°C
Air flow	0.3-4L/min	Heating core power	About 60W
Size	245(L)X184(W)X135(H)mm		

952



Hot Air Table	Parameters	Soldering Station	Parameters
Voltage	AC220V	Power	60W
Power	270W	Voltage	AC24V
Display Mode	Analog	Heating Element	Ceramic heating core
Temperature Range	150-500°C	Temperature Range	200-480°C
Air Flow	0.3-4L/Min	Heating Core Power	2.0mV以下
Size	245(L)X184(W)X135(H)mm		



952V



952H

952-V



Hot Air Table	Parameters	Parameters	Parameters
Voltage	AC220V	Power	50W
Power	150W~650W	Voltage	AC24V
Display Mode	Analog	Heating Element	Ceramic heating core
Temperature Range	100-500°C	Temperature Range	200-480°C
Air Flow	0.12-1.6Nm3/h	Heating Core Power	About 50W
Size	245(L)X184(W)X135(H)mm		

952-H



Hot Air Table	Parameters	Parameters	Parameters
Voltage	AC220V 50Hz	Power	60W
Power	650W	Voltage	AC24V
Display Mode	Analog	Heating Element	Ceramic heating core
Temperature Range	100-500°C	Temperature Range	200-480°C
Air Flow	120L/min	Heating Core Power	About 60W
Size	245(L)X184(W)X135(H)mm		

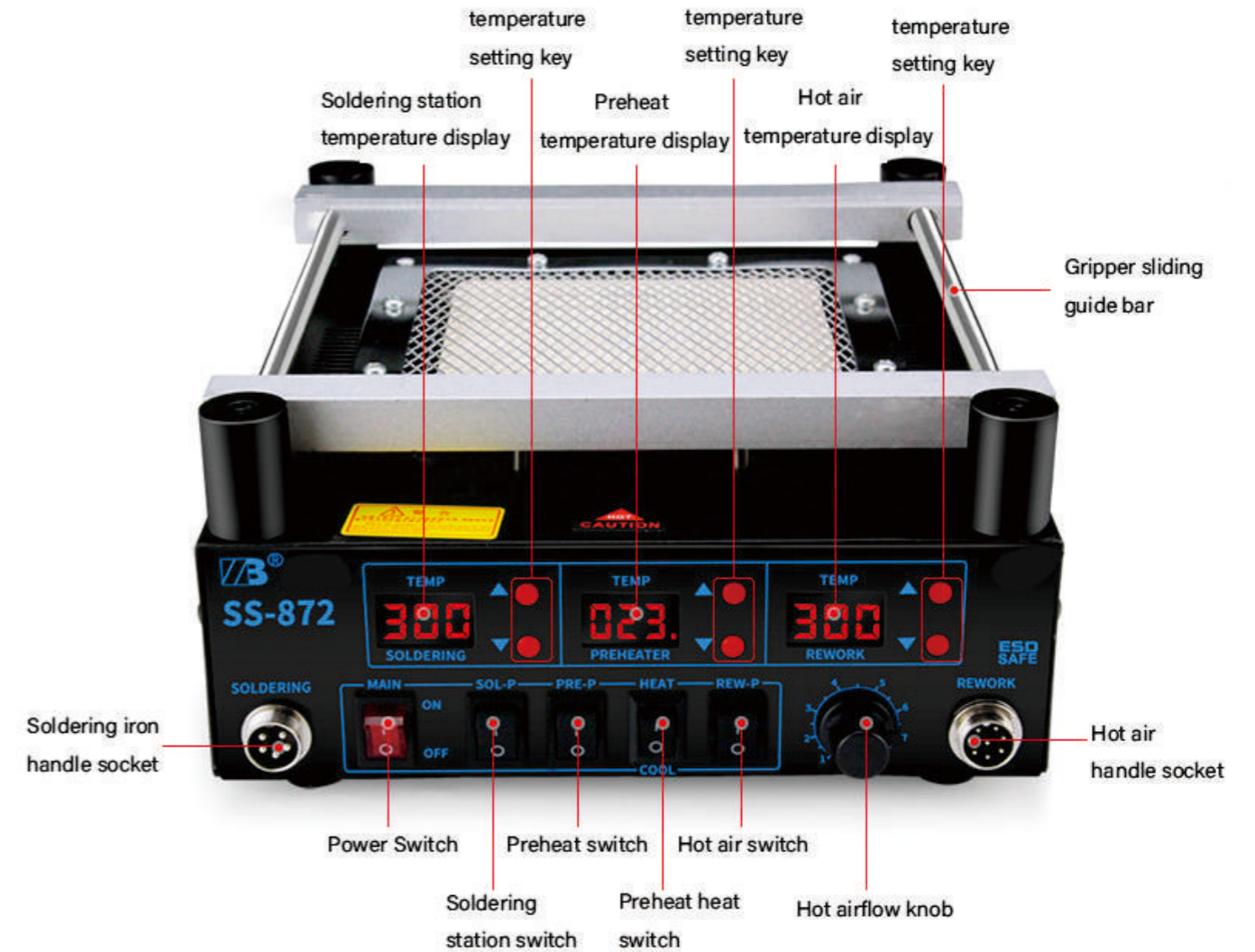


SS-871

SS-872



Model	SS-871
Voltage	AC220V ±5% 50HZ
Power	605W
Temperature range	100~500°C
Size	221mm×251mm×112mm
Display Mode	LED
Packaging List	Machine *1 Power cord *1 Instruction manual *1



Model	SS-872
Voltage	AC220V ±5% 50HZ
Power	605W
Temperature range	100~500°C
Size	221mm×251mm×112mm
Display mode	LED

Hot Air Gun		Soldering Station	
Output Voltage	AC220V 50HZ 450W	Output Voltage	AC24V 50W
Air Pump	<45dB	Ground impe	<2Ω
Air flow	Max 120L/min	Ground voltage	<2mV
Temperature range	100~500°C		



AS600 Single Station

AS600 Double Station

Product Analysis



- ① Function setting key
- ② Temperature rise button
- ③ Function confirmation key
- ④ Temperature decrease button
- ⑤ Convenient replacement of soldering head
- ⑥ Soldering iron sleep socket
- ⑦ Soldering iron cleaning place

Product Information Parameters

Model: AS600 **Power Rating:** 75W(Peak Value150W)
Input Voltage: AC 220V 50Hz **General Soldering:** 20W~50W
Soldering Temperature: 200°C- 450°C (400°F~850°F) ±5%
Sleep Temperature: 100°C- 300°C (200°F~600°F) ±5%
Power Dissipation: 24V 75W
Soldering Iron Frame: Metal Soldering Iron Frame
Impedance between soldering iron head and ground: <2Ω
Potential between the soldering iron head and the ground: <2mV
Description of accessories: Host, Handle, Soldering Iron Frame, Power Cord, Anti-Static Wire, Sponge, Instruction Manual
Power Line Length: National Standard Triangle Plug **Weight:** 2.5kg

Packaging Accessories



- ① Carton ② Host ③ Soldering iron holder ④ Handle
- ⑤ Anti static wire ⑥ Power Cord ⑦ Instructions



ASS-371



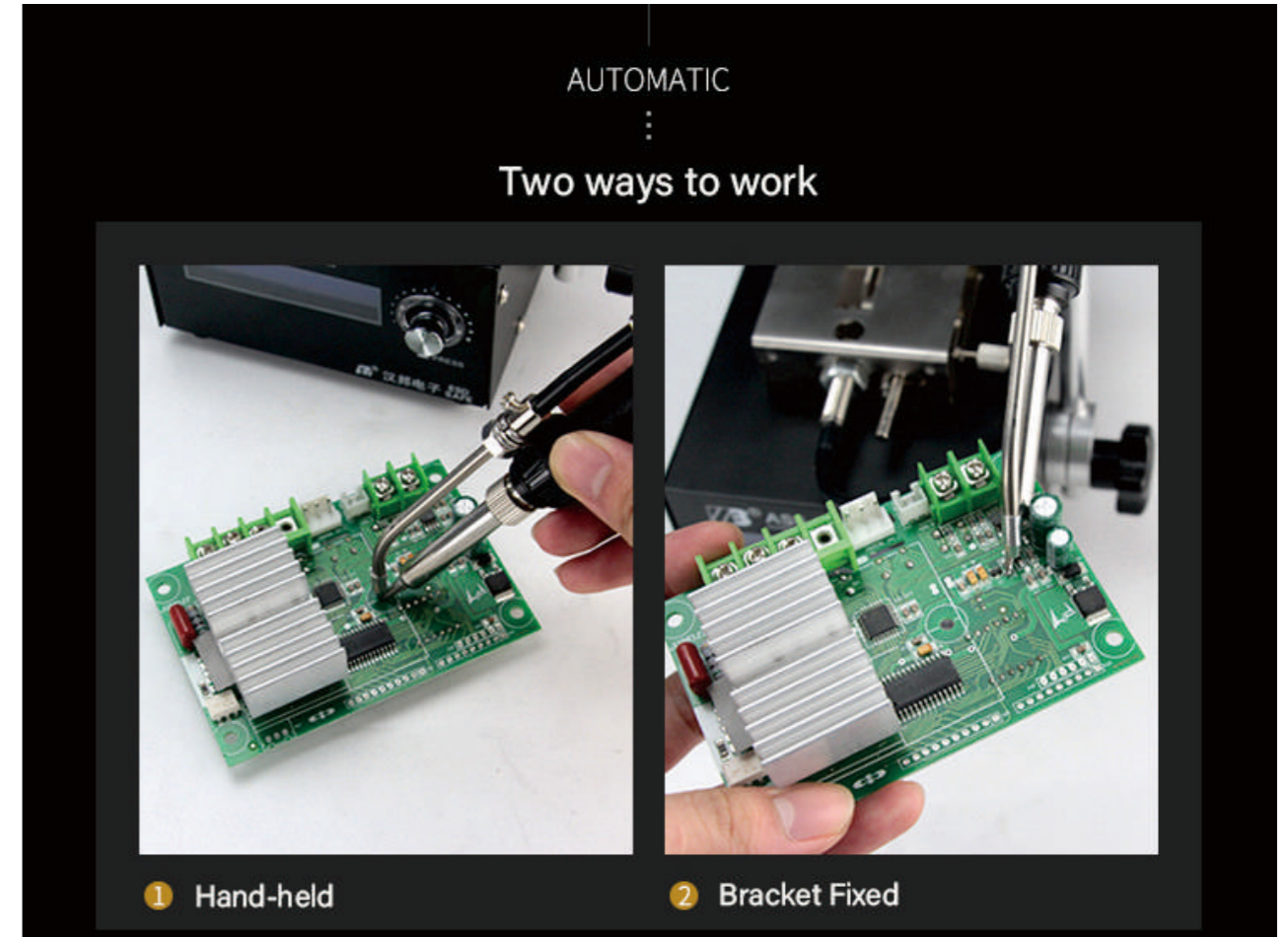
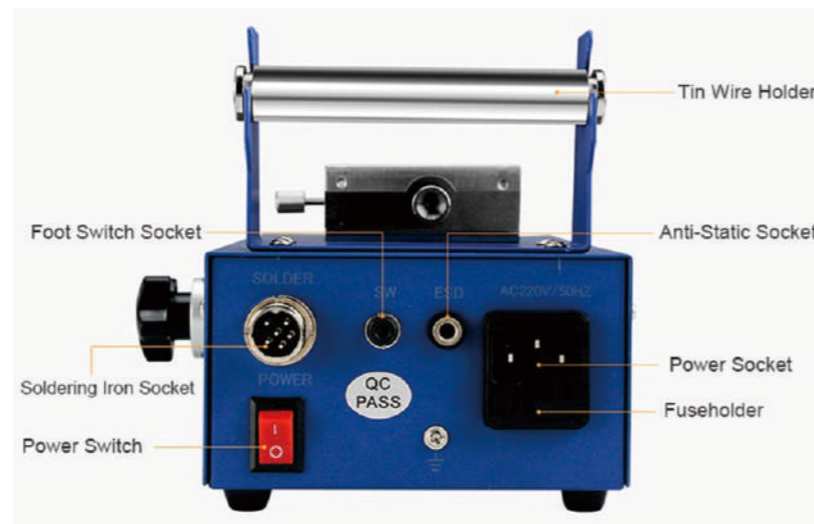
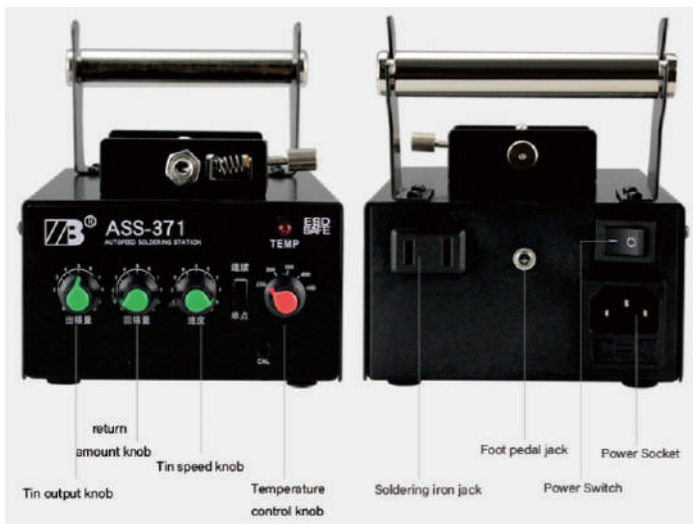
ASS-385A



ASS-385B



ASS-385C



Product Information

PRODUCT INFORMATION

Model	ASS-375A	ASS-375B	ASS-375C	ASS-371
Power	AC220V±10% 50HZ 75W			AC220V±10% 50HZ 60W
Temp range	(LCD display) 200-480±2°C			200-480±5°C
Output Length	0-90mm			0-80mm
Interval time	0-9s			0-10s
Speed	3-30mm/s			
Control mode	Foot pedal	Foot pedal	Foot/button	Foot pedal
Heating core	B1321	B1321	A1321	ASS-371H
Tin wire	0.5-1.2mm			
Iron Tips	ST-900/936			



ASS-376A



ASS-376B

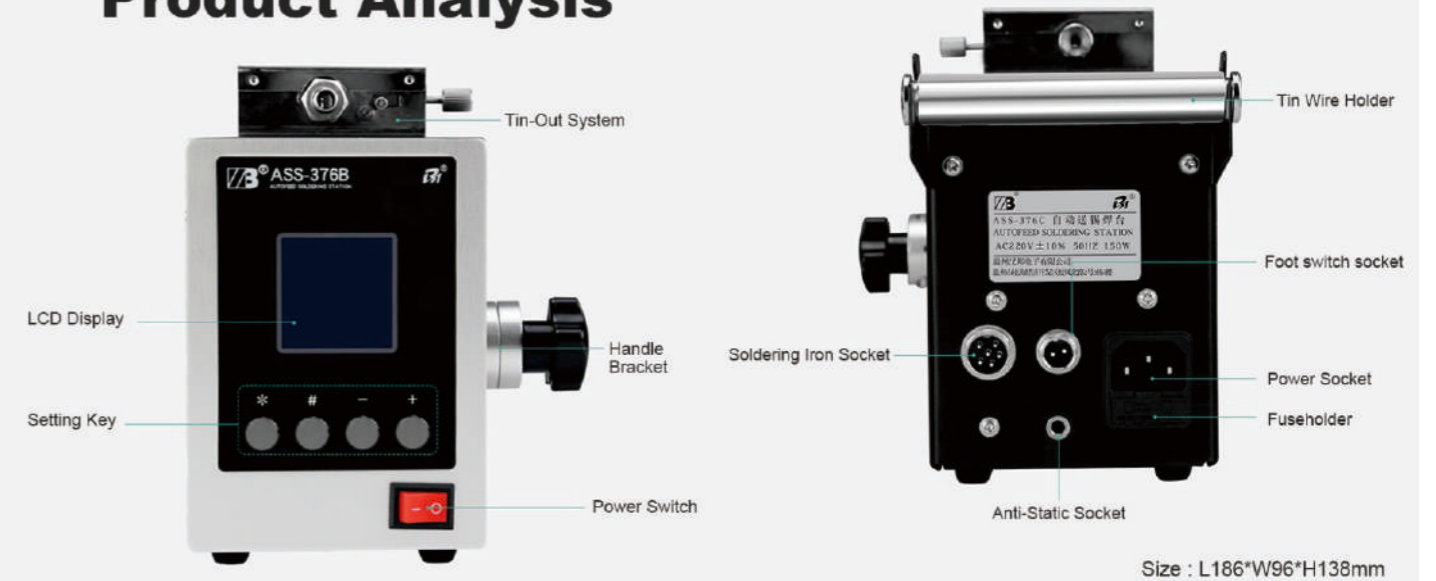


ASS-376C

Product List



Product Analysis



Product Parameters

Model	ASS-376A	ASS-376B	ASS-376C
Power	AC220V±10% 50HZ 150W		
Temperature Range	LCD: 100-600±2°C		
Heating Core Voltage	AC 36V380KHZ (leakage voltage<2mV, grounding resistance<2Q)		
LEN	0-99.5mm		
RET	0-9.5mm		
INR	0-9.5s		
SPD	1-40mm/s		
MODE	Manual 0 / Automatic 1-9		
Control Mode	Foot		Foot/Button
Size	L186*W96*H138mm		
Heating Core	SS-203 P H		
Tin Wire	0.5/0.6/0.8/1.0/1.2mm		
Soldering Iron Tips	ST-200 Series		



ZB-LS914



ZB-LS916

PRODUCT INTRODUCTION

Zhengbang LS914/916 Soldering Iron: Upgrade & Heat up Quickly. Adopts a premium ceramic core with 40/60w High Power, which heats up to perating temperatures in 10 seconds, and its heat output to hold at a constant temperature. The 220Volt digital soldering iron can be accurately adjusted to 200°C-450°C. Great fit for basic soldering needs, It is widely used in soldering circuit boards, mobile phones, guitars, jewelry, appliance repair.

PRODUCT DETAILS



Plug in the Power Supply



Dip the Rosin or Solder Oil



Tin Wire



Welding

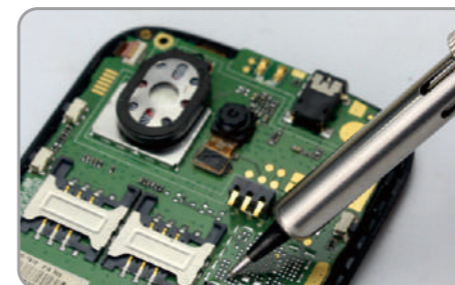


Clean

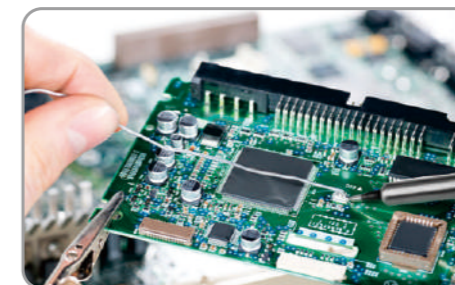


Complete

APPLICATION SCOPE



Cellphone Repairs



Electronic DIY Maintenance



Production Line Operation

PRODUCT PARAMETERS

Model	ZB-LS914	ZB-LS916
Power	40W	60W
Temperature Range	350~380°C	420~450°C
Voltage	220V	
Power Cord	Silicone Line	
Heater Element	Ceramic Heating Core	

PRODUCT INTRODUCTION

Zhengbang LS905 Soldering Iron: This smart soldering iron is lightweight and portable. Adopts a premium ceramic core with 60w High Power, which heats up to operating temperatures in 10 seconds, and its heat output to hold at a constant temperature. The 220Volt digital soldering iron can be accurately adjusted to 200°C-450°C. Great fit for basic soldering needs, It is widely used in soldering circuit boards, mobile phones, guitars, jewelry, appliance repair.

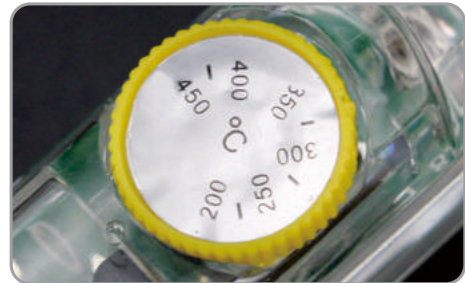
PRODUCT PARAMETERS

Model	ZB-LS905
Voltage	220V 50HZ
Power	60W
Temperature Range	200~450°C
Weight	185g



ZB-LS905

PRODUCT DETAILS



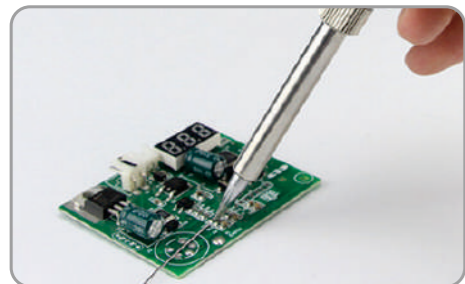
Adjust the Temperature



Plug in the Power Supply



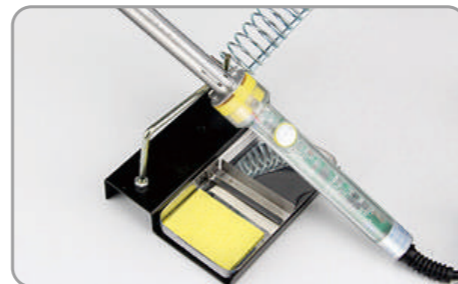
Dip the Rosin or Solder Oil



Welding

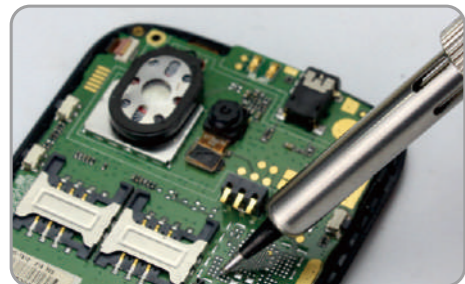


Clean

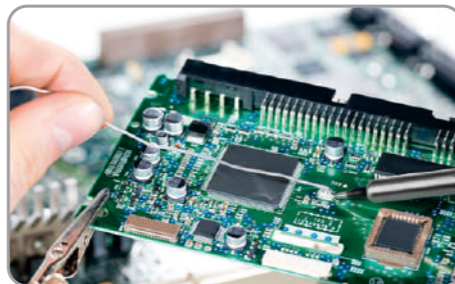


Complete

APPLICATION SCOPE



Cellphone Repairs



Electronic DIY Maintenance



Production Line Operation

PRODUCT INTRODUCTION

Zhengbang LS917 Soldering Iron: This soldering iron adopts a premium ceramic core with 70w High Power, which heats up to operating temperatures in 10 seconds, and its heat output to hold at a constant temperature. The 110-120Volt digital soldering iron can be accurately adjusted to 180-500°C/ 356°-920°F and switch between °C / °F. Clear Digital Display & Anti-scalding Handle, accurately control the heat

PRODUCT PARAMETERS

Model	ZB-LS917
Voltage	AC110-220V±10% 50/60HZ
Power	70W
Temperature Range	180~500°C
Heater Element	Ceramic Heating Core



ZB-LS917

PRODUCT DETAILS



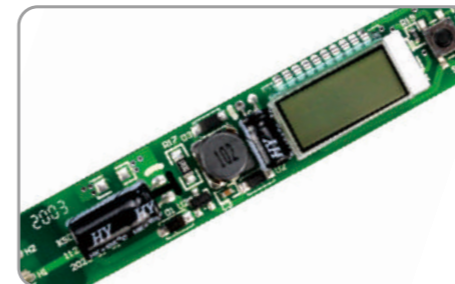
LCD Displays



Rapid Heating Up & Safer



Efficient Heat Dissipation & Anti-scalding Handle



Digital Display Intelligent Chip



Silicone Power Cord

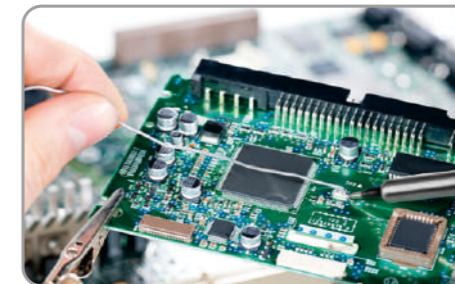


heat Insulation Protective Cover

APPLICATION SCOPE



Cellphone Repairs



Electronic DIY Maintenance



Production Line Operation



ZB-LS680-B



ZB-LS6100-B

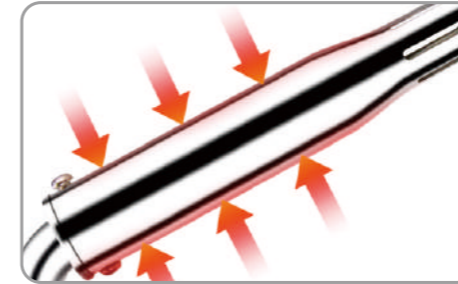


ZB-LS6150-B

PRODUCT INTRODUCTION

Zhengbang LS680 Soldering Iron: Upgrade & Heat up Quickly, Rewound nickel-chrome wire heating core, safe and stable, long service life. 80W~300W High Power, which heats up to operating temperatures in 10 seconds, and its heat output to hold at a constant temperature. The operating voltage is 200-240V.

PRODUCT DETAILS



Mica Heating Core



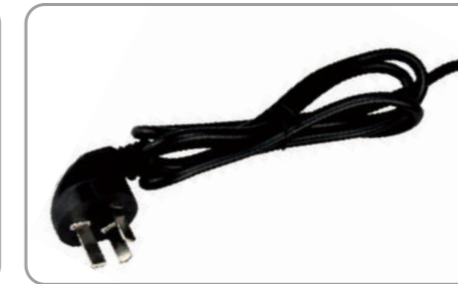
Indicator Light



Lead-Free Alloy Tip



Heat Resistant Handle

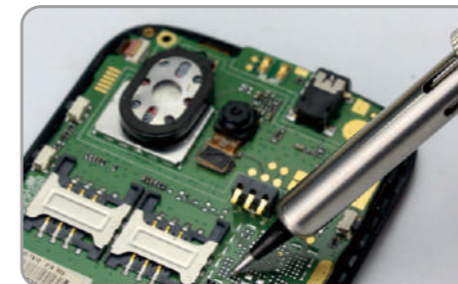


GB Three Plug

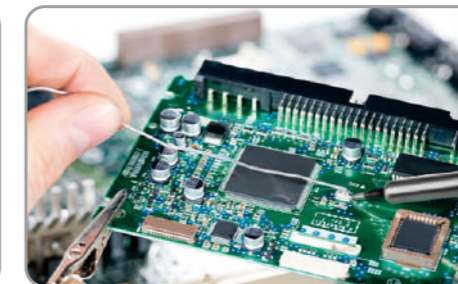


3 Different Sizes

APPLICATION SCOPE



Cellphone Repairs



Electronic DIY Maintenance



Production Line Operation

PRODUCT PARAMETERS

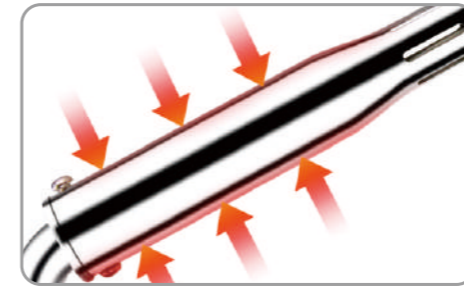
Model	ZB-LS680-B	ZB-LS6100-B	ZB-LS6150-B
Style		Cuspidal	
Power	80W	100W	150W
Length	228mm	236mm	250mm
Diameter	1.8mm	1.9mm	2.2mm



PRODUCT INTRODUCTION

Zhengbang LS680 Soldering Iron: Upgrade & Heat up Quickly, Rewound nickel-chrome wire heating core, safe and stable, long service life. 80W~300W High Power, which heats up to operating temperatures in 10 seconds, and its heat output to hold at a constant temperature. The operating voltage is 200-240V.

PRODUCT DETAILS



Mica Heating Core



Indicator Light



Lead-Free Alloy Tip



Heat Resistant Handle

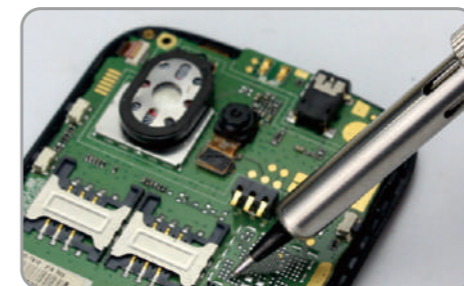


GB Three Plug

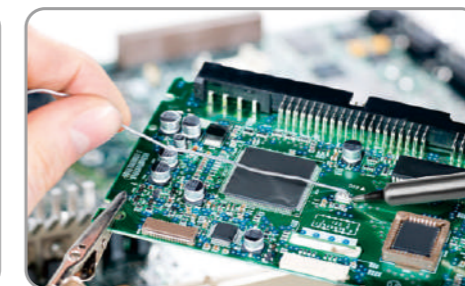


5 Different Sizes

APPLICATION SCOPE



Cellphone Repairs



Electronic DIY Maintenance



Production Line Operation

PRODUCT PARAMETERS

Model	ZB-LS680-W	ZB-LS6100-W	ZB-LS6150-W	ZB-LS6200	ZB-LS6300
Style	Curved				
Power	80W	100W	150W	200W	300W
Length	231mm	236mm	248mm	267mm	293mm
Diameter	10mm	11mm	12mm	20mm	25mm

LSH80B
(STANDARD CONFIGURATION)
80W CUSPIDAL
High Power Electric Soldering Iron

Output Power : **40W 80W**
Diameter of the Casing : 15mm
Wire Length : 1.2 Meter
Product Weight : 190g



260mm
1.7mm

LSH100B
(STANDARD CONFIGURATION)
100W CUSPIDAL
High Power Electric Soldering Iron

Output Power : **50W 100W**
Diameter of the Casing : 17mm
Wire Length : 1.2 Meter
Product Weight : 200g



267mm
1.8mm

LSH150B
(STANDARD CONFIGURATION)
150W CUSPIDAL
High Power Electric Soldering Iron

Output Power : **75W 150W**
Diameter of the Casing : 20mm
Wire Length : 1.2 Meter
Product Weight : 244g



280mm
2.5mm

High-Power Cuspidal Head Series
80W/100W/150W Three Options Available



DETAIL DISPLAY

Power Indicator

The green light power is half of the total power, and the red light is full power



Anti-Folding Power Cable

Soft, effectively protect the tail end from breaking



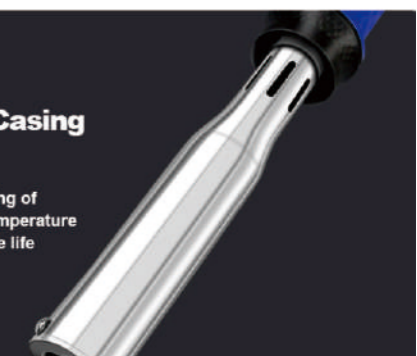
Alloy Tip

Forged with red copper base material and alloy, more corrosion resistant and longer service life than pure copper soldering iron



Stainless Steel Casing

Prevent accelerating the aging of consumables due to high temperature work and prolong the service life



Product Model	Supply Voltage	Temperature Range (±8%)	Product Length	The Diameter of the Casing	Head Width (mm)	Wire Length	Weight
Cuspidal 80W	220V	460°/500°	260mm	15mm	(1.7) ϕ 6.5	1.2M	190g
Cuspidal 100W	220V	480°/520°	265mm	17mm	(1.8) ϕ 7.6	1.2M	200g
Cuspidal 150W	220V	500°/540°	280mm	20mm	(2.5) ϕ 9.0	1.2M	244g
Curved 80W	220V	460°/500°	260mm	15mm	10mm	1.2M	193g
Curved 100W	220V	480°/520°	267mm	17mm	12mm	1.2M	203g
Curved 150W	220V	500°/540°	290mm	20mm	13mm	1.2M	260g
Curved 200W	220V	510°/550°	330mm	25mm	20mm	1.2M	407g
Curved 300W	220V	520°/560°	355mm	28mm	24.7mm	1.2M	548g

Note: The above data are manually measured, and there will be some errors in different batches, please refer to the physical object!

LSH80W
(STANDARD CONFIGURATION)

80W CURVED

High Power Electric Soldering Iron

Output Power : 40W 80W

Diameter of the Casing : 15mm

Wire Length : 1.2 Meter

Product Weight : 193g

LSH100W
(STANDARD CONFIGURATION)

100W CURVED

High Power Electric Soldering Iron

Output Power : 50W 100W

Diameter of the Casing : 17mm

Wire Length : 1.2 Meter

Product Weight : 203g

LSH150W
(STANDARD CONFIGURATION)

150W CURVED

High Power Electric Soldering Iron

Output Power : 75W 150W

Diameter of the Casing : 20mm

Wire Length : 1.2 Meter

Product Weight : 260g

LSH200W
(STANDARD CONFIGURATION)

200W CURVED

High Power Electric Soldering Iron

Output Power : 100W 200W

Diameter of the Casing : 25mm

Wire Length : 1.2 Meter

Product Weight : 407g

LSH300W
(STANDARD CONFIGURATION)

300W CURVED

High Power Electric Soldering Iron

Output Power : 150W 300W

Diameter of the Casing : 28mm

Wire Length : 1.2 Meter

Product Weight : 548g

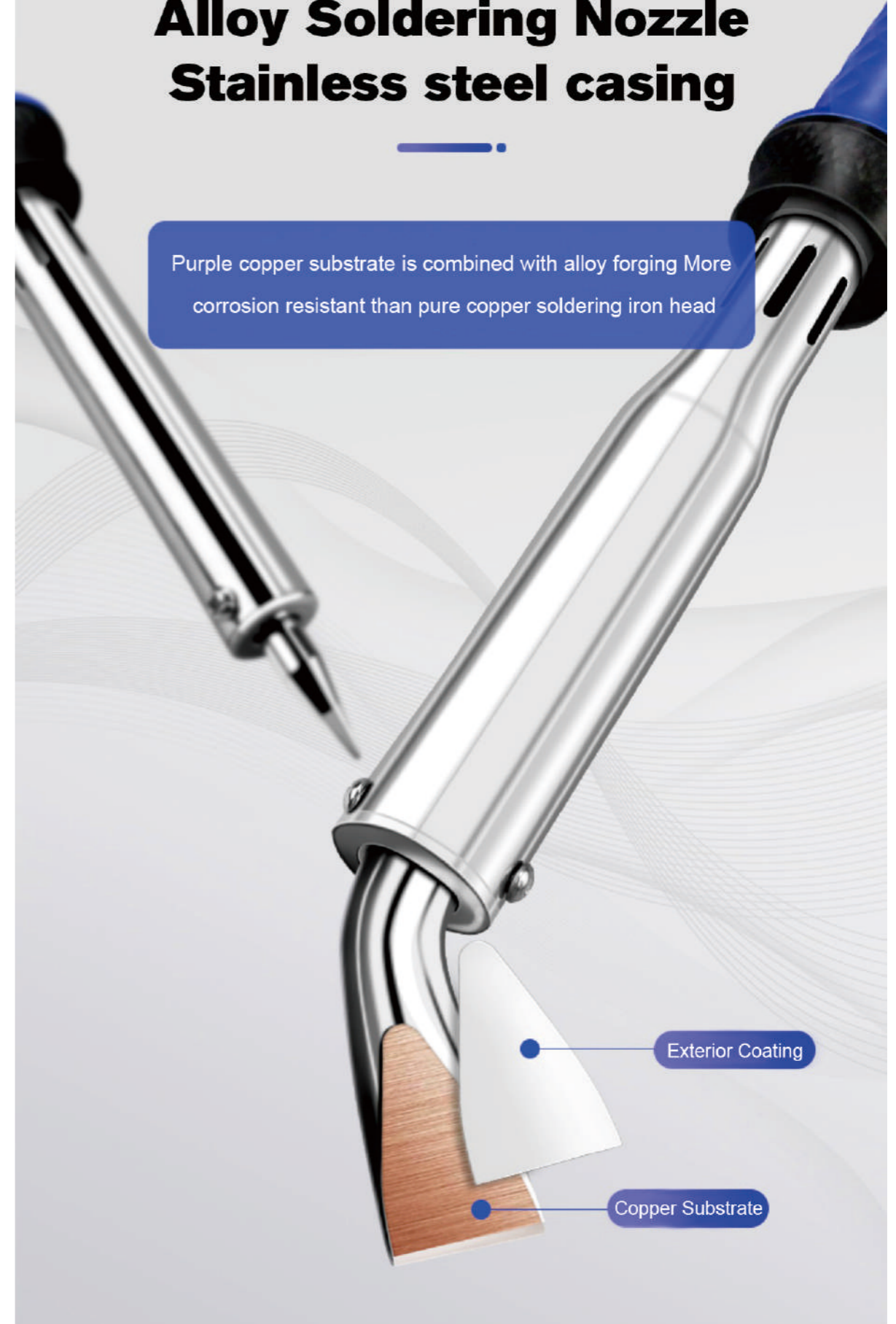
Product Model	Supply Voltage	Temperature Range (±8%)	Product Length	The Diameter of the Casing	Head Width (mm)	Wire Length	Weight
Cuspidal 80W	220V	460°/500°	260mm	15mm	(1.7) φ6.5	1.2M	190g
Cuspidal 100W	220V	480°/520°	265mm	17mm	(1.8) φ7.6	1.2M	200g
Cuspidal 150W	220V	500°/540°	280mm	20mm	(2.5) φ9.0	1.2M	244g
Curved 80W	220V	460°/500°	260mm	15mm	10mm	1.2M	193g
Curved 100W	220V	480°/520°	267mm	17mm	12mm	1.2M	203g
Curved 150W	220V	500°/540°	290mm	20mm	13mm	1.2M	260g
Curved 200W	220V	510°/550°	330mm	25mm	20mm	1.2M	407g
Curved 300W	220V	520°/560°	355mm	28mm	24.7mm	1.2M	548g

Note: The above data are manually measured, and there will be some errors in different batches, please refer to the physical object!

Product Structure Analysis



Alloy Soldering Nozzle Stainless steel casing





LS936H-R



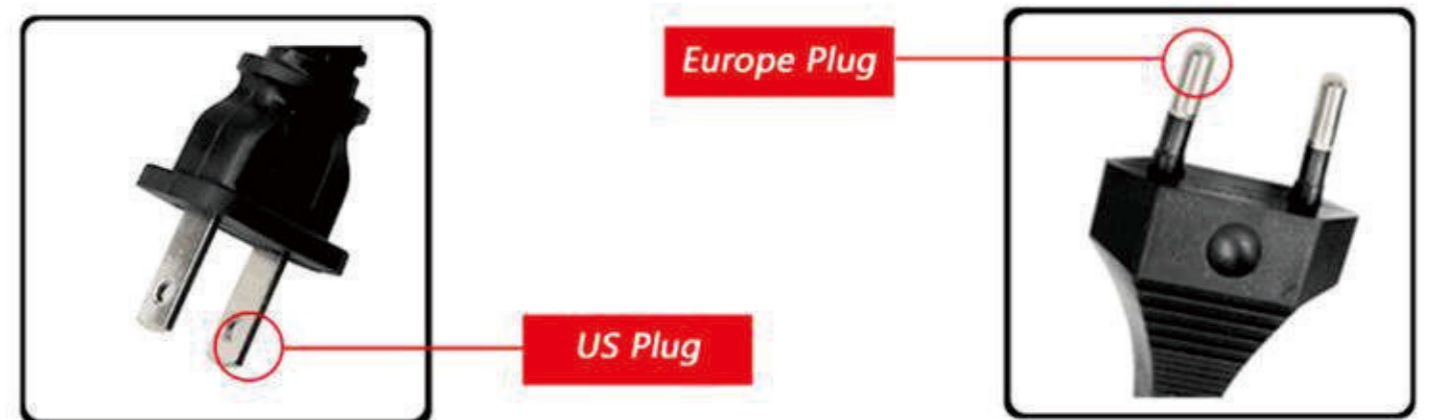
LS936H-B

LOREM IPSUM



Letme[®] VS OTHERS

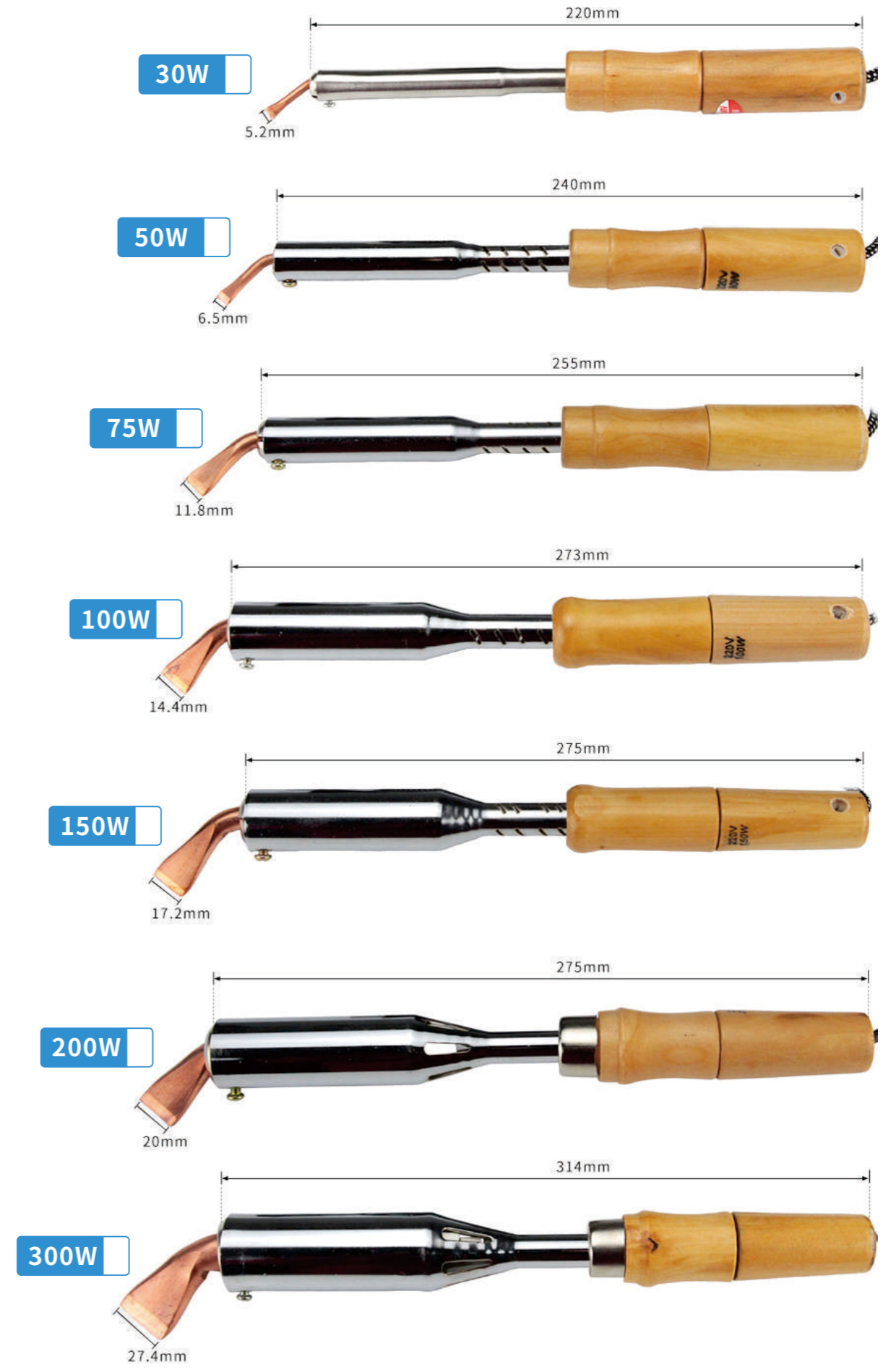
<p>Quick Heat Dissipation Improve Soldering Efficiency 😊</p>	<p>Slow Heat Dissipation Reduce Soldering Efficiency ☹️</p>
<p>180°C-480°C (356°F-896°F) Precise To Every Degree 😊</p>	<p>Single Temperature Control ☹️</p>
<p>Ceramic Heating Core High Quality And Durable 😊</p>	<p>Intoler To High Temperature ☹️</p>





PRODUCT PARAMETERS

Model	Wooden Handle Soldering Iron	Product Format	External heat
Voltage	220V	Handel Material	Pure Wooden
Tip Material	Pure Purple Copper	Heating Element	Ceramic heating core
Power	30W/50W/75W/100W/150W/200W/300W		



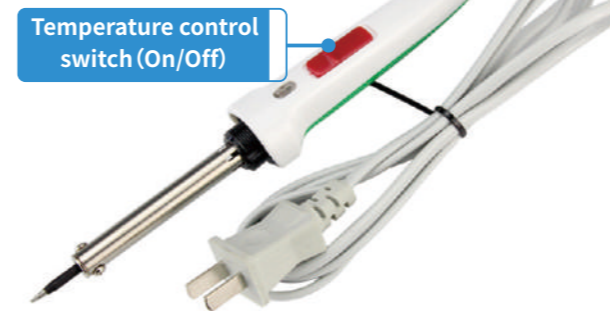
Switch Soldering Iron



Switch Soldering Iron



LSF60 MULTIPLE SPECIFICATIONS SOLDERING IRON TIPS



Temperature control switch (On/Off)

Model	LSC30
Power	30W
Switch	Switch Soldering Iron
Length	240mm



Temperature control switch (Adjustable high/low temperature)

Model	LSF60
Power	60W
Switch	Tem control models soldering iron
Length	240mm

Without light



30W



40W



60W

With light



30W



40W

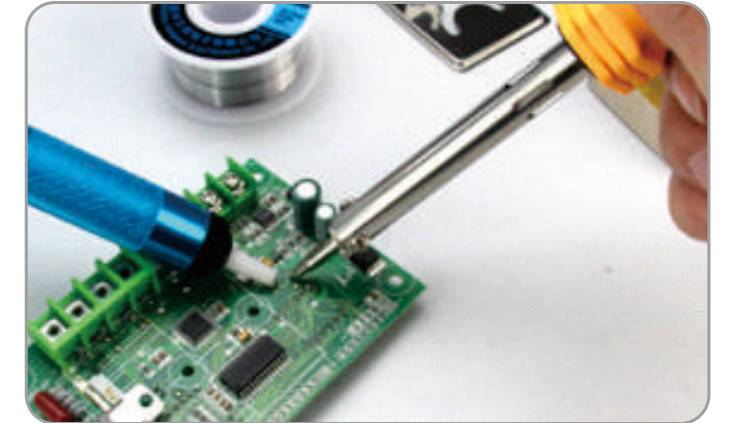


60W

STEPS TO USE



1.Plug in the power to warm up



2.Preheating completed for welding



3.Clean soldering iron tip impurities



4.End of use leave to cool

PRODUCT PARAMETERS

Model	Power	Total Length	Handle length	Power Cord Length
LSA30	30W	200mm	107mm	140cm
LSA40	40W	210mm	107mm	140cm
LSA60	60W	215mm	107mm	140cm

Model	Power	Total Length	Handle length	Power Cord Length
LSB30	30W	220mm	120mm	140cm
LSB40	40W	215mm	120mm	140cm
LSB60	60W	230mm	120mm	140cm



POL-DN-3C



POL-DN-4C



POL-DN-6C

PRODUCT PARAMETERS

Model	POL-DN-3C	POL-DN-4C	POL-DN-6C
Voltage		12-36V	
Fit Screw	1.2-2mm	3-5mm	4-6mm
Output	1.5-13kgf.cm	4-25kgf.cm	8-35kgf.cm
Speed	800-1200r/m	650-950r/m	700-1000r/m
Screw Bit	4mm	5mm	6mm
Weight	500g	720g	790g
Original Screw Bit	2.5mm 4mm	3mm 5mm	4mm 6mm
Applicable Type	Cell phones, laptops, small toys	Desktop computers, home appliances, small appliances, etc	Refrigerator air conditioning and other large electrical appliances

PRODUCT INTRODUCTION

This is an economical electric screwdriver which has high performance and excellent quality. The perfect power screwdriver for everyday needs and DIY projects. Small volume, light weight; More convenient to carry. Can work long hours. The torque precision is accurate, the torque adjustment is from small to large, stepless adjustment, and the speed remains unchanged. Fast speed, simple operation, increase work efficiency.

PRODUCT DETAILS



Torque Adjustment



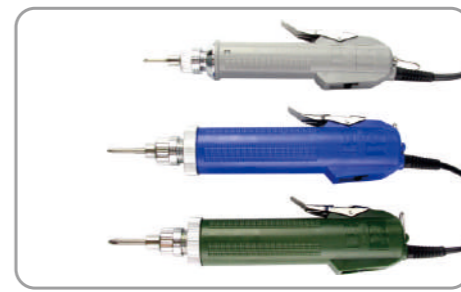
Forward / Reverse



Lengthen the Power Cord



Easy Installation



The Fuselage Design



Three Kinds of Models

APPLICATION SCOPE



Daily Maintenance



Factory Line



Decorate Construction



Repair Electrical Appliances



Assemble the Computer



Handmade



ZB-SD-C154

ZB-SD-D154



ZB-SD-C255

ZB-SD-D255

ZB-SD-C356

ZB-SD-D356

ZB-SD-C35S

ZB-SD-D35S

PRODUCT PARAMETERS

Model	ZB-SD-C154/D154	ZB-SD-C255/D255	ZB-SD-C356/D356	ZB-SD-C35S/D35S
Voltage	DC 18-36V			
Output	2-15kgf.cm	3-25kgf.cm	5-35kgf.cm	
Speed	1000-1400r.p.m	1000-1500r.p.m	700-1100r.p.m	
Power	50W	60W	80W	
Weigh	0.6kg	0.8kg		
Applicable Type	Cell phones, laptops, small toys	Desktop computers, home appliances, small appliances, etc	Refrigerator air conditioning and other large electrical appliances	

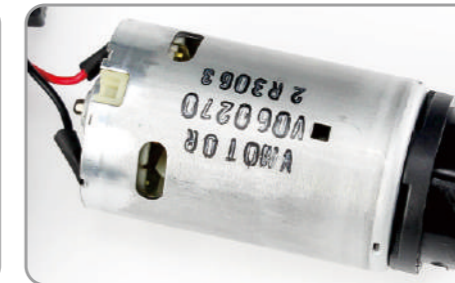
PRODUCT INTRODUCTION

SD-C series Semi-automatic electric screwdriver, high quality brushless motor. high performance and excellent quality. SD-D series Fully-automatic electric screwdriver, high quality brushless motor. high performance and excellent quality. The perfect power screwdriver for everyday needs and DIY projects. Small volume, light weight; More convenient to carry. Can work long hours. The torque precision is accurate, the torque adjustment is from small to large, stepless adjustment, and the speed remains unchanged. Fast speed, simple operation, increase work efficiency.

PRODUCT DETAILS



Torque Adjustment



Johnson Electric



Ergonomic Non-Slip Handle



Adjustable Constant Source Current



Gb 3C Certified Three-Pin Plug



Easy Installation

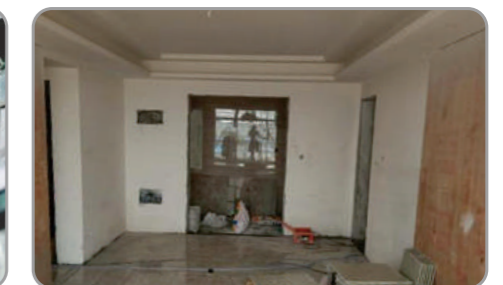
APPLICATION SCOPE



Daily Maintenance



Factory Line



Decorate Construction



Repair Electrical Appliances



Assemble the Computer



Handmade



ZB-SD-A154



ZB-SD-A256

ZB-SD-A356

ZB-SD-A35S

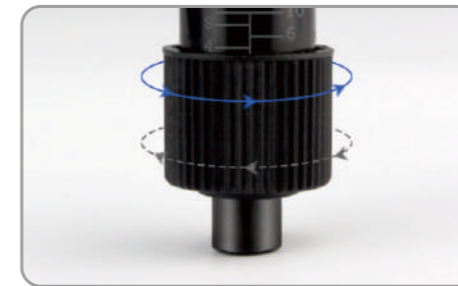
PRODUCT PARAMETERS

Model	ZB-SD-A154	ZB-SD-A255	ZB-SD-A356	ZB-SD-A35S
Voltage	DC 18-36V			
Output	1-15kgf.cm	2-25kgf.cm	5-35kgf.cm	
Speed	1300r.p.m	1400r.p.m	1100r.p.m	
Screw Bit	φ4mm	φ5mm	φ6mm	1/4(H6.35)
Fit Screw	1.6-3mm	2-5mm	3-6mm	
Power	50W	60W	80W	
Weigh	0.6kg	0.8kg		
Applicable Type	Cell phones, laptops, small toys	Desktop computers, home appliances, small appliances, etc	Refrigerator air conditioning and other large electrical appliances	

PRODUCT INTRODUCTION

SD-A series High speed electric screwdriver, high quality brushless motor. high performance and excellent quality. The perfect power screwdriver for everyday needs and DIY projects. Small volume, light weight; More convenient to carry. Can work long hours. The torque precision is accurate, the torque adjustment is from small to large, stepless adjustment, and the speed remains unchanged. Fast speed, simple operation, increase work efficiency.

PRODUCT DETAILS



Torque Adjustment



Forward / Reverse



ABS Shell



Easy Installation



4 Kinds of Specifications



Accessories Included

APPLICATION SCOPE



Daily Maintenance



Factory Line



Decorate Construction



Repair Electrical Appliances



Assemble the Computer



Handmade



ZB-SD-F205

ZB-SD-F286

ZB-SD-F28S

PRODUCT PARAMETERS

Model	ZB-SD-F205	ZB-SD-F286	ZB-SD-F28S
Working Voltage	AC100-240V 50/60HZ		
Output	2-20kgf.cm	3-28kgf.cm	
Speed	1000rpm	900rpm	
Screw Bits	1.6-5.0mm	2.0-6.0mm	
Power	80W		
Weight	625g		

PRODUCT INTRODUCTION

This is an economical electric screwdriver which has high performance and excellent quality. The perfect power screwdriver for everyday needs and DIY projects. Small volume, light weight; More convenient to carry. Can work long hours. The torque precision is accurate, the torque adjustment is from small to large, stepless adjustment, and the speed remains unchanged. Fast speed, simple operation, increase work efficiency.

PRODUCT DETAILS



Torque Adjustment



Micro Switch



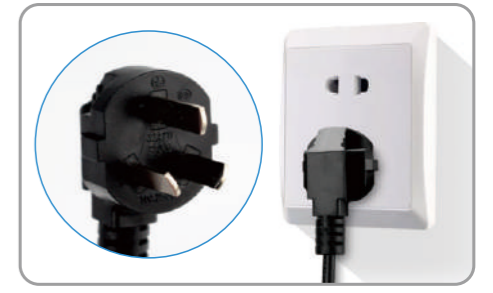
Forward / Reverse



ABS Shell



Three Kinds of Models



Gb 3C Certified Three-Pin Plug

APPLICATION SCOPE



Daily Maintenance



Factory Line



Decorate Construction



Repair Electrical Appliances



Assemble the Computer



Handmade



ZB-SD-H074



ZB-SD-H185



ZB-SD-H356

PRODUCT PARAMETERS

Model	ZB-SD-H074	ZB-SD-H185	ZB-SD-H356
Voltage	AC 220V 50/60Hz		
Output	1-7kgf.cm	2-18kgf.cm	1-7kgf.cm
Speed	1000-1400rpm		700-1100rpm
Precisio	±5% kgf.cm		
Fit Screw	1.2-4mm	1.6-5mm	2-6mm
Screw Bit	φ4mm	φ5mm	φ6mm
Weigh	0.66kg		
Applicable Type	Cell phones, laptops, small toys	Desktop computers, home appliances, small appliances, etc	Refrigerator air conditioning and other large electrical appliances

PRODUCT INTRODUCTION

Fully automatic electric screwdriver, high quality brushless motor. high performance and excellent quality. The perfect power screwdriver for everyday needs and DIY projects. Small volume, light weight; More convenient to carry. Can work long hours. The torque precision is accurate, the torque adjustment is from small to large, stepless adjustment, and the speed remains unchanged. Fast speed, simple operation, increase work efficiency.

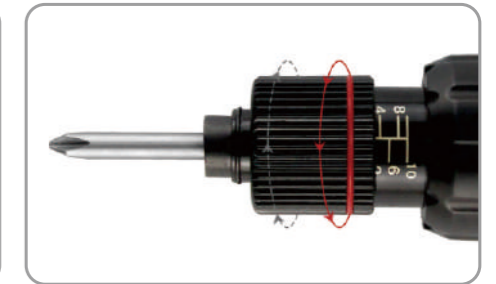
PRODUCT DETAILS



High Quality Brushless Motor



Automatic Electric Clutch



Torque Adjustment



3 Kinds of Specifications



Easy Installation



Accessories Included

APPLICATION SCOPE



Daily Maintenance



Factory Line



Decorate Construction



Repair Electrical Appliances



Assemble the Computer



Handmade



ZB-SD-L255

ZB-SD-L356

ZB-SD-L35S

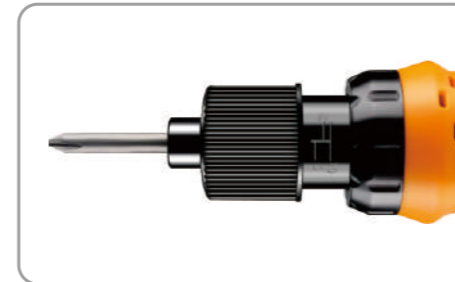
PRODUCT PARAMETERS

Model	ZB-SD-L255	ZB-SD-L356	ZB-SD-L35S
Screw Bit	φ5mm	φ6mm	1/4(φ6.35mm)
Power		DC 12V	
Output	2-25kgf.cm		5-35kgf.cm
Speed	1400rpm		1100rpm
Fit Screw	2-5mm		3-6mm
Weight		0.5kg	

PRODUCT INTRODUCTION

This cordless electric screwdriver is your go-to for small projects. Economical electric screwdriver which has high performance and excellent quality. The perfect power screwdriver for everyday needs and DIY projects. Small volume, light weight; More convenient to carry. Can work long hours. The torque precision is accurate, the torque adjustment is from small to large, stepless adjustment, and the speed remains unchanged. Fast speed, simple operation, increase work efficiency.

PRODUCT DETAILS



Torque Adjustment



High Quality Lithium Battery



Three Kinds of Models



Easy Installation



ABS Shell



Kraft Paper Box

APPLICATION SCOPE



Daily Maintenance



Factory Line



Decorate Construction



Repair Electrical Appliances



Assemble the Computer



Handmade



LS936H-B



Fine design

makes you feel more comfortable



ELECTRIC SCREWDRIVER PARAMETERS

LEARN MORE ABOUT THE PRODUCT

Product name	rechargeable screwdriver	No-load speed	1000r/min
Model	SD-802LI	Standard screwdriver head	6mm(802)
Output voltage	12V	Net weight of product	700g
Output torque	1~50kgf.cm		



Toolbox not included, just for a reference.



Note: There is error in manual measurement, please refer to the actual measurement

Power is durable and more convenient for operation

**Fast charging
and long life**



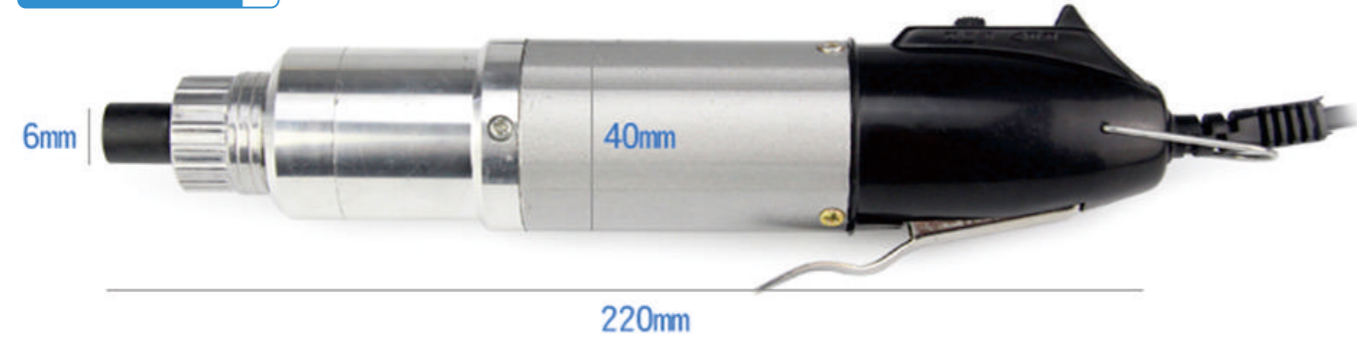
SD-800



SD-801



SD-802



INSTALLATION METHOD OF BATCH HEAD



1.PRESS THE LOCKING SLEEVE



2.LOWER THE SCREWDRIVER HEAD AND ALIGN IT WITH THE DETENT



3.LOOSEN THE NATURAL LOCKING

POWER MATCHING



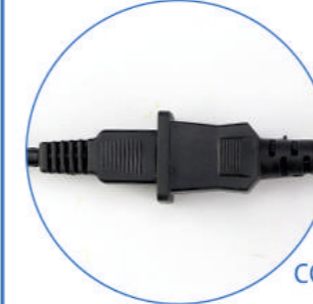
POWER MATCHING



1 DRAG 2 DESKTOP POWER SUPPLY 3 GEAR ADJUSTMENT

CONNECT TO THE MICRO POWER SUPPLY

THE TOTAL LENGTH OF THE CONNECTION BETWEEN THE TWO IS ~3.5 METERS. THE PRODUCT PLUG HAS STRONG VERSATILITY



CONNECTION PORT



CONNECT DESKTOP POWER SUPPLY

IT CAN MATCH THE TRADITIONAL ELECTRIC SCREWDRIVER POWER SUPPLY





BSD-101



BSD-102

PRODUCT DETAILS



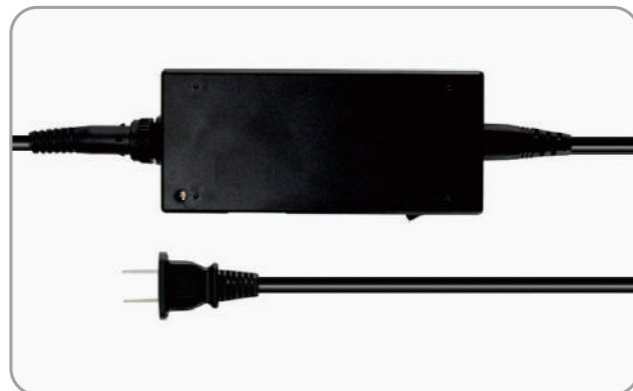
0-23 degree visual HD scale



Use with a power supply



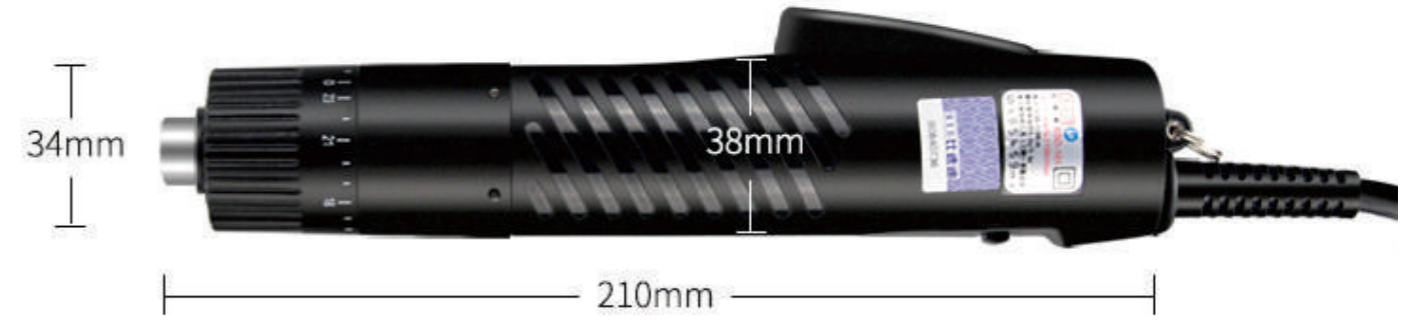
R-gear removal screw
F-gear fastening screw
Easy to remove and tighten the screws



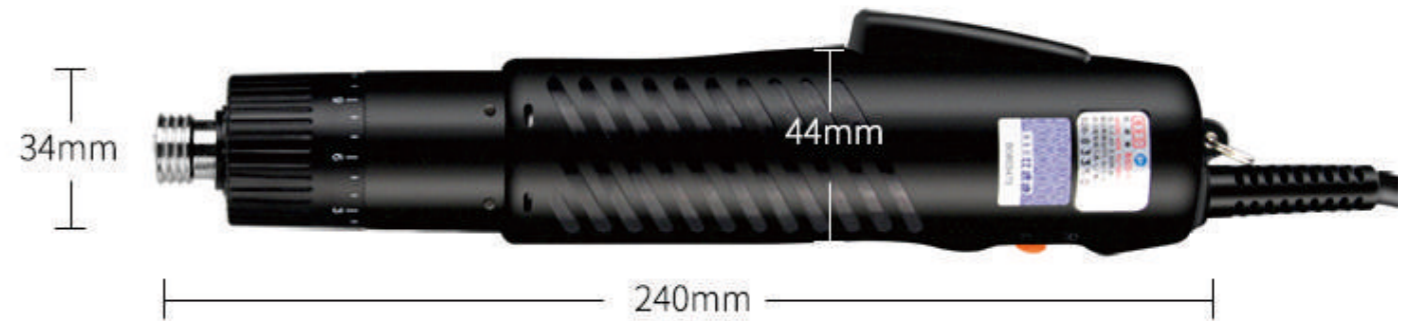
Customized EU,US,AU,UK plugs available

Technical Parameter

BSD-101



BSD-102



Model	Screwdriver Bits (mm)	Output torque	Speed	Power	Voltage	Applicable Screws	Weight(g)
BSD-101	5	0.5~15	1100	36	220	1.2~5	445
BSD-102	6.35	4~35	1000	45	220	2~6	510

Screwdriver Bits Installation



1.Press the locking sleeve



2.Alignment into the screwdriver bit



3.Release, done



ZB-DS361



ZB-DS362



ZB-DS363

PRODUCT INTRODUCTION

Simple design allows easy one-handed use, lightweight and compact, suck the solder away easily, anti-static with replaceable nylon tip and durable aluminum housing. Best for removing solder from PCB through-hole solder joints. Very sturdy, will work good to remove existing solder from a circuit board.

PRODUCT DETAILS



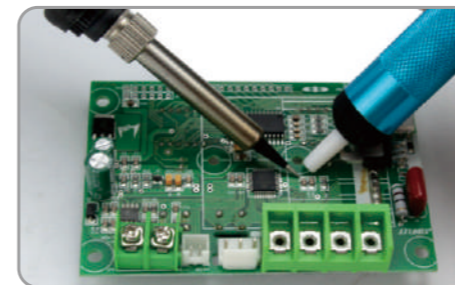
High Temperature Resistant Tin Suction Nozzle



Simple Design



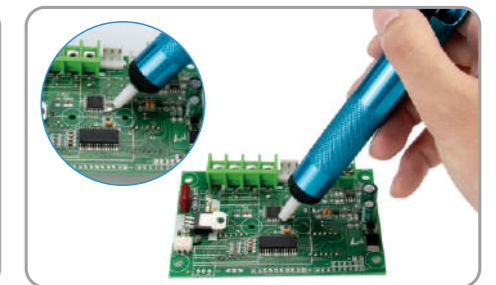
Easy Disassembly



Easy to Operate



Replaceable Nozzle



Strong Suction

APPLICATION SCOPE



Maintenance TV



Maintenance of Computer



Maintenance of Mobile Phone

PRODUCT PARAMETERS

Model	ZB-DS361	ZB-DS362	ZB-DS363
Color	Blue	Red	Sky Blue
Size	195mm*21mm	190mm*20mm	190mm*20mm
Material	Plastic	Aluminum	Aluminum
Sealing Gas Ring		Single Ring	



ZB-DS108



ZB-DS108ESD

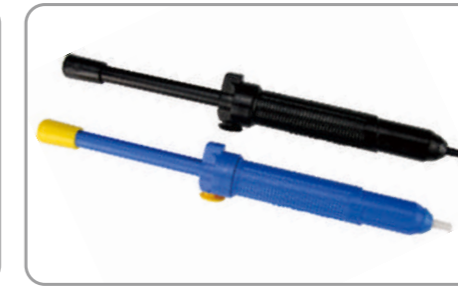
PRODUCT INTRODUCTION

Simple design allows easy one-handed use, lightweight and compact, suck the solder away easily. design designed in color blue and black plastic, has anti-skid design so it is easy to hold and use. Solder removal kit the solder sucker can be used for both broad and small places, hard to reach areas, can be used to correct all mistakes with small boards on PCBs, remove relays and other components from printed circuit boards.

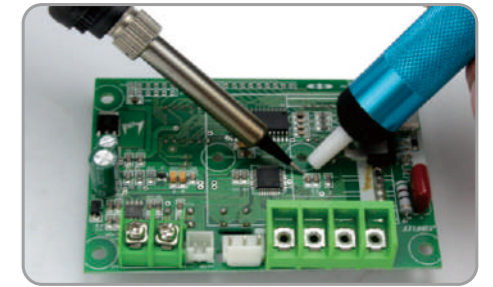
PRODUCT DETAILS



High Temperature Resistant Tin Suction Nozzle



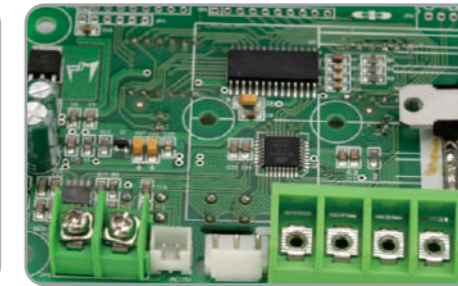
Unique Design



Easy to Operate



Easy Disassembly



Easy to Adjust



Strong Suction

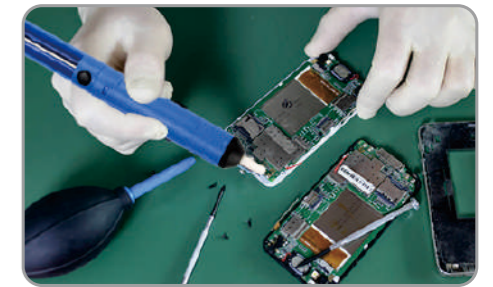
APPLICATION SCOPE



Maintenance TV



Maintenance of Computer



Maintenance of Mobile Phone

PRODUCT PARAMETERS

Model	ZB-DS108	ZB-DS108ESD
Color	Blue+Yellow	Black
Size	330mm*28mm	
Material	Plastic+ABS	
Sealing Gas Ring	Single Ring	



ZB-DS366



ZB-DS366A

PRODUCT INTRODUCTION

Simple design allows easy one-handed use, lightweight and compact, suck the solder away easily. High quality material - the desoldering pump body made of premium quality ABS material, with non-slip sponge and nylon nozzle, anti-static, heat resistant and durable.

Wide application - correcting mistakes on small PCB boards, removing relays and other components from printed circuit boards, cleaning small components, re-soldering and desoldering.

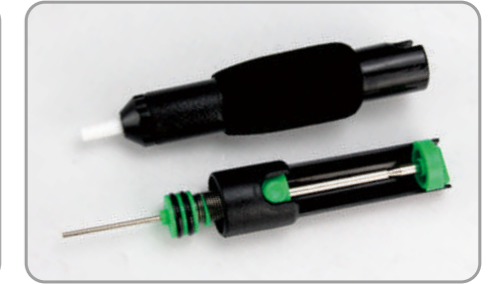
PRODUCT DETAILS



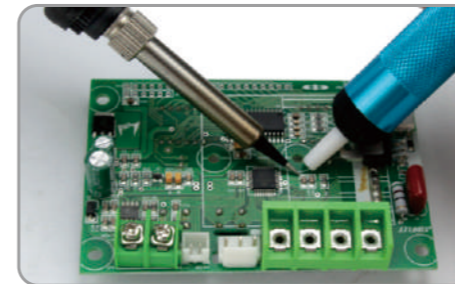
High Temperature Resistant Tin Suction Nozzle



Nano Vacuum Cotton



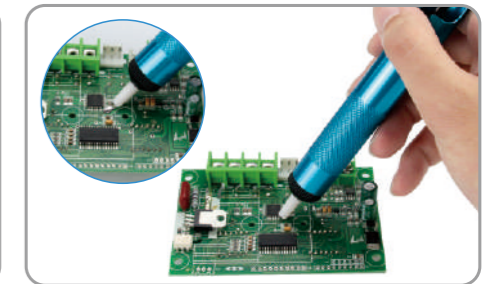
Easy Disassembly



Easy to Operate



Replaceable Nozzle



Strong Suction

APPLICATION SCOPE



Maintenance TV



Maintenance of Computer



Maintenance of Mobile Phone

PRODUCT PARAMETERS

Model	ZB-DS366	ZB-DS366A
Color	Green	Grass Green
Size	210mm*21mm	
Material	Plastic+ABS	
Sealing Gas Ring	Single Ring	



MODEL	DS-331	DS-332
STORAGE TIN BUCKET	Ø 32mm	Ø 42mm
POWER	Heating Power 30W Tin Absorption Power 350W (Instant)	
SUPPLY VOLTAGE	AV220V ± 10% 50HZ	

PRODUCT DETAILS



Tin fusion/tin suction Dual use



Metal alloy material, Avoid oxidation, long service life.



The nozzle can be removed and replaced, multiple sizes available



Stainless steel enclosure with built-in heating element

Product Analysis





XS-845SD

XS-842SD

PRODUCT DETAILS



Tin fusion/tin suction Dual use



Metal alloy material, the nozzle can be removed and replaced



XS-845SD-Aluminum alloy tin cylinder
XS-842SD-Plastic tin cylinder
2 types of materials to meet different needs



Product Packaging

Model	XS-842SD	XS-845SD
Tin Cylinder	Plastic Tin Copper	Aluminum alloy tin copper
Power Consumption	30W	
Supply Voltage	220V 50HZ	
Suction nozzle diameter	1.2mm/1.6mm	

Product Analysis





PRODUCT DETAILS



Tin fusion/tin suction Dual use



Metal alloy material, the nozzle can be removed and replaced

PRODUCT PARAMETER



Model: SY365-8

Power: 36W

Soldering Iron Tip: 36W

Temperature: 450°C

Heating mode: external heating

Heating core: 35W ceramic heating core



ZB-PT-10 ~ ZB-PT-15

PRODUCT INTRODUCTION

Industrial grade stainless steel tweezers of various specifications Stainless steel overall thickened and tightly clamped and multi-specification to meet more needs for use. Straight head and elbow are optional.

PRODUCT DETAILS



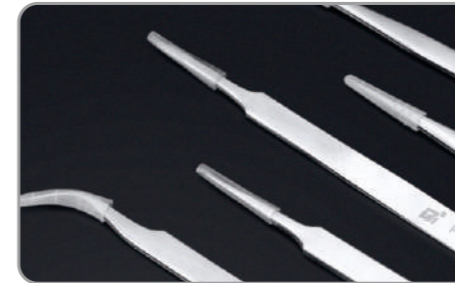
Stainless Steel Forging



Pointed Dense



Laser Logo



Protective Case

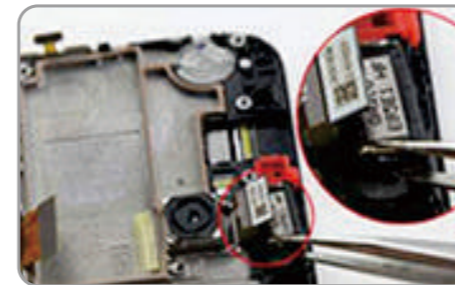


Ergonomic Craftsmanship



Hardness up to HRC40 or more

APPLICATION SCOPE



Phone Repair



IC Repair



Small parts repair

PRODUCT PARAMETERS

Model	Name	Size
ZB-PT-10	Standard Tip	120mm*9mm
ZB-PT-11	Extra Long Tip	140mm*8mm
ZB-PT-12	Elastic Tip	135mm*10mm
ZB-PT-13	Oblate Tip	120mm*10mm
ZB-PT-14	Fine Tip	120mm*10mm
ZB-PT-15	Curved Tip	120mm*10mm

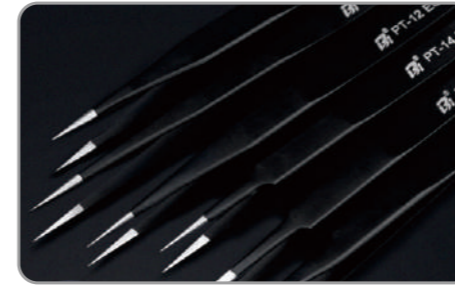


ZB-PT-10 ESD ~ ZB-PT-15 ESD

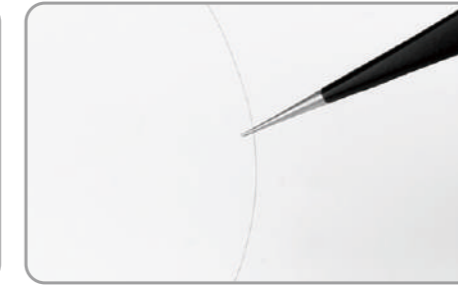
PRODUCT INTRODUCTION

Various specifications of industrial-grade anti-static tweezers Overall thickening and clamping, multiple specifications to meet more needs. Straight and angled heads are optional.

PRODUCT DETAILS



Stainless Steel Forging



Pointed Dense



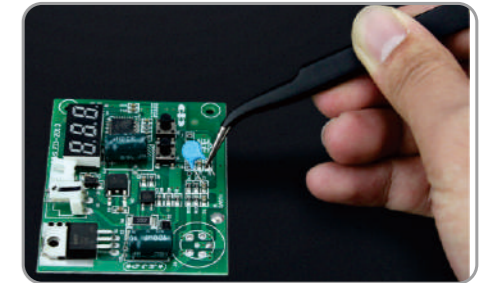
Laser Logo



Protective Case

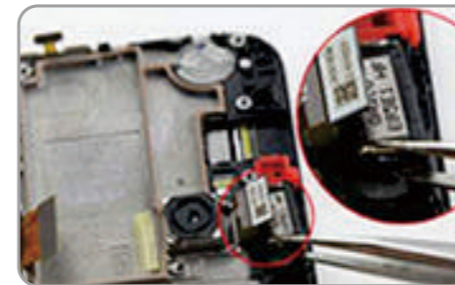


Overall thickening of tweezers



Ergonomic craftsmanship

APPLICATION SCOPE



Phone Repair



IC Repair



Small parts repair

PRODUCT PARAMETERS

Model	Name	Size
ZB-PT-10 ESD	Standard Tip	120mm*9mm
ZB-PT-11 ESD	Extra Long Tip	140mm*8mm
ZB-PT-12 ESD	Elastic Tip	135mm*10mm
ZB-PT-13 ESD	Oblate Tip	120mm*10mm
ZB-PT-14 ESD	Fine Tip	120mm*10mm
ZB-PT-15 ESD	Curved Tip	120mm*10mm



ZB-SP080

PRODUCT INTRODUCTION

Multi-functional duck tip wire stripper: Wire Stripper and Cutter cuts and strips 10-24 AWG stranded wire with ease, precision machined stripping holes easily remove insulation without damaging the wire, simple and practical, optimized design, multiple functions

PRODUCT DETAILS



Multifunctional wire stripper



Custom stripping length



Sharp shears



Tension adjustable knob

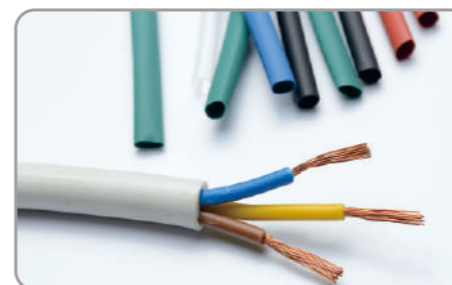


Ergonomic design



Strong Suction

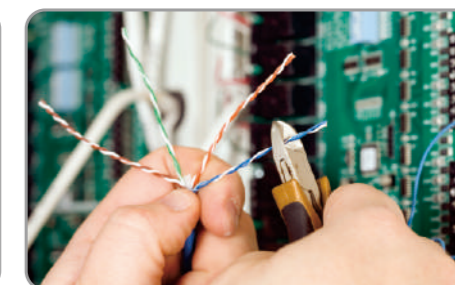
APPLICATION SCOPE



Strip Wire



Home Wiring



Line Maintenance

PRODUCT PARAMETERS

Model	ZB-SP080
Color	Orange
Size	173mm*83mm
Weight	240g
Wire Core Diameter	0.8-2.6mm

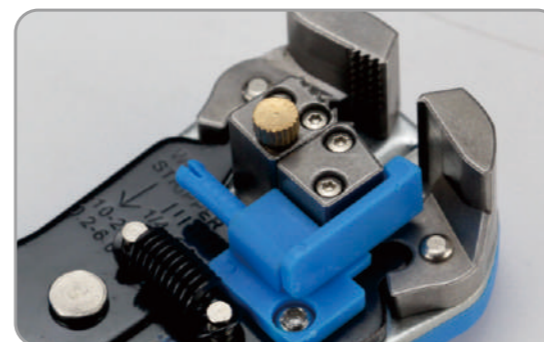


ZB-SP082

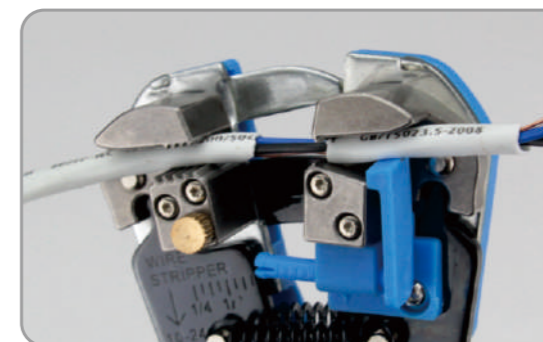
PRODUCT INTRODUCTION

Multi-function automatic wire stripper: Wire Stripper Set for Stripping, Cutting and Crimping, Wire Stripper and Cutter cuts and strips 22-10AWG stranded wire with ease, precision machined stripping holes easily remove insulation without damaging the wire, simple and practical, optimized design, multiple functions

PRODUCT DETAILS



Adjusting Knob



Alloy Steel

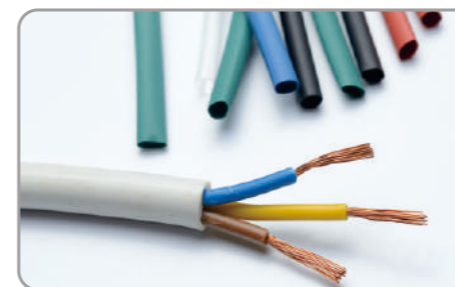


Carbon Steel



Comfortable Handle

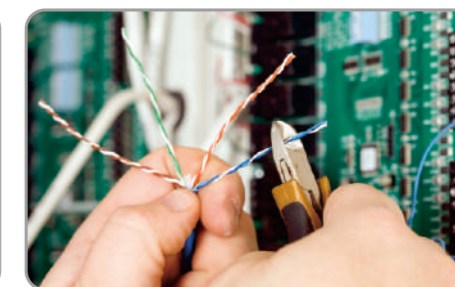
APPLICATION SCOPE



Strip Wire



Home Wiring



Line Maintenance

PRODUCT PARAMETERS

Model	ZB-SP082
Color	Blue
Size	210mm*48mm*103mm
Blade hardness	HRC55-60
Material	Chromium vanadium alloy steel

ZB-SP501



ZB-SP502



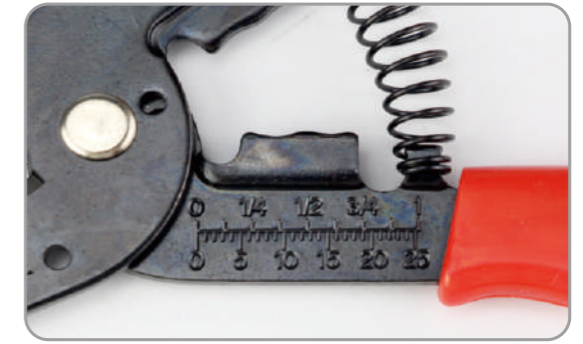
PRODUCT INTRODUCTION

Multi-function automatic wire stripper: SP501/SP502 series, 6 different models are available for different working environments. Wire Stripper Set for Stripping, Cutting, Clamp and Crimping, precision machined stripping holes easily remove insulation without damaging the wire, simple and practical, optimized design, multiple functions.

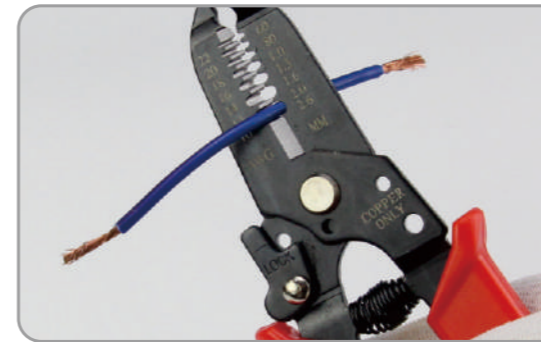
PRODUCT DETAILS



Qualitative Carbon Steel



Opening and Closing Flexible

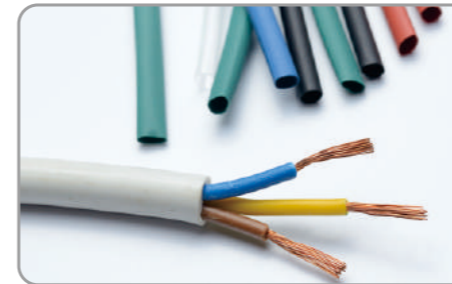


Sharp Edge



Lock Function

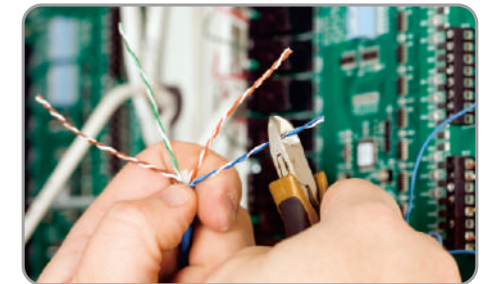
APPLICATION SCOPE



Strip Wire



Home Wiring

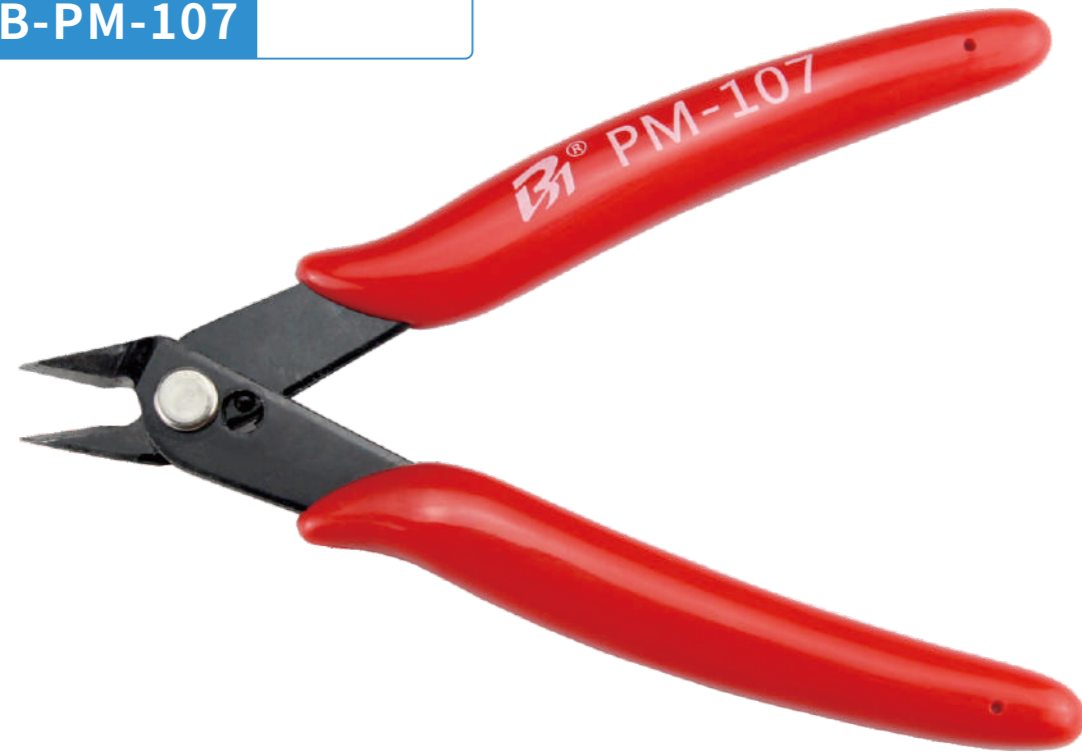


Line Maintenance

PRODUCT PARAMETERS

Model	ZB-SP501	ZB-SP502
Color	Black Red	
Material	Carbon steel	
Size	170mm	

ZB-PM-107



ZB-PM-109



PRODUCT INTRODUCTION

Industrial grade electronic pliers, sharp and durable, widely used. Used for cutting electronic parts, flexible wire, plastic burrs, etc.

PRODUCT DETAILS



Carbon Tool Steel



Tail spring design

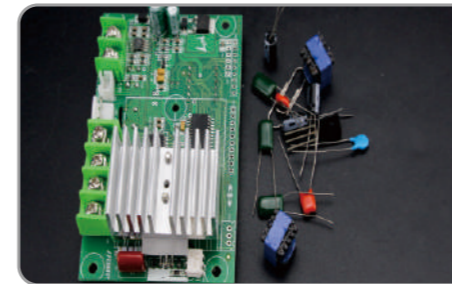


Knife edge heat treatment

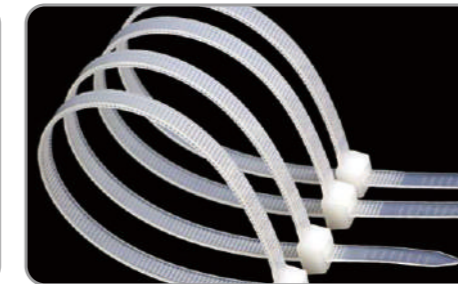


PVC plastic handle

APPLICATION SCOPE



Shear electronic element



Product plastic burrs



Trinket processing

PRODUCT PARAMETERS

Model	ZB-PM-107	ZB-PM-109
Length		123mm
Material		Mn65



ZB-PM-205

ZB-PM-206

ZB-PM-208

PRODUCT INTRODUCTION

Industrial grade electronic pliers, sharp and durable, widely used. Used for cutting electronic parts, flexible wire, plastic burrs, etc.

PRODUCT DETAILS



Carbon Tool Steel



Tail spring design

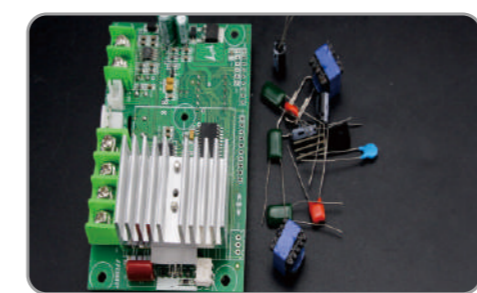


Knife edge heat treatment

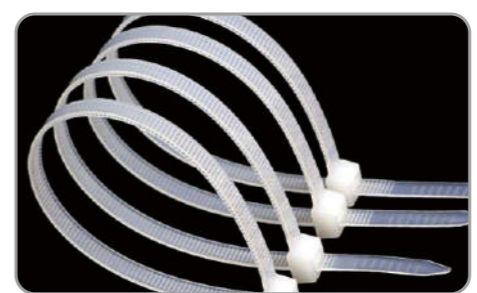


PVC plastic handle

APPLICATION SCOPE



Shear electronic element



Product plastic burrs



Trinket processing

PRODUCT PARAMETERS

Model	ZB-PM-205	ZB-PM-206	ZB-PM-208
Length	133mm	133mm	143mm
Material		Mn65	



PRODUCT PARAMETERS

MODEL	OVERALL LENGTH	WIDTH	LENGTH	WEIGHT
PM-3116	175mm	27mm	64mm	233g
Soft Copper Wire:Ø2.3mm Iron Wire:Ø1.8mm Crimping:0.75/1.5mm ²				
PM-3118	200mm	30mm	65mm	305g
Soft Copper Wire:Ø3.2mm Iron Wire:Ø2.3mm Crimping:0.75/1.5mm ²				
PM-3127	194mm	25mm	80mm	285g
Soft Copper Wire:Ø3.2mm Iron Wire:Ø2.3mm Crimping:2.5mm ²				
PM-3128	215mm	28mm	90mm	366g
Soft Copper Wire:Ø3.2mm Iron Wire:Ø2.3mm Crimping:2.5mm ²				
MODEL	OVERALL LENGTH	WIDTH	LENGTH	WEIGHT
PM-3316	160mm	21mm	68mm	151g
Soft Copper Wire:Ø2.0mm Iron Wire:Ø1.6mm Crimping:0.75/1.5mm ²				
PM-3318	207mm	22mm	93mm	219g
Soft Copper Wire:Ø2.8mm Iron Wire:Ø2.0mm Crimping:0.75/1.5mm ²				
PM-3327	210mm	26mm	95mm	264g
Soft Copper Wire:Ø2.8mm Iron Wire:Ø2.0mm Crimping:2.5mm ²				
PM-3328	230mm	26mm	110mm	332g
Soft Copper Wire:Ø2.8mm Iron Wire:Ø2.0mm Crimping:2.5mm ²				
MODEL	OVERALL LENGTH	WIDTH	LENGTH	WEIGHT
PM-3216	160mm	24mm	49mm	188g
Soft Copper Wire:Ø2.3mm Iron Wire:Ø1.8mm Crimping:0.75/1.5mm ²				
PM-3227	185mm	24mm	69mm	249g
Soft Copper Wire:Ø2.3mm Iron Wire:Ø1.8mm Crimping:2.5mm ²				
PM-3228	200mm	26mm	75mm	294g
Soft Copper Wire:Ø2.3mm Iron Wire:Ø1.8mm Crimping:2.5mm ²				



63% Tin Content

PRODUCT FEATURES

High purity tin ore harvesting
 Made of brand new tin ore electrolysis, less trace impurities, bright surface of tin wire
 Rosin cored solder wire
 Fast welding speed and low residue

PRODUCT PARAMETERS



99.3% Tin content

Model	63	Product Name	Tin Wire
Rosin content	2.0%	Product melting point	183°C
Operating temperature	240~250°C	Product composition	Tin 63% Contains lead 37%
Product Diameter	0.6-0.8-1.0-1.2-1.5-2.0(mm)		
Weight	50g-100g		



Model	Lead-free	Product Name	Tin Wire
Rosin content	2.0%	Product melting point	227°C
Operating temperature	285~310°C	Product composition	Tin 99.7% Copper 0.7%
Product Diameter	0.6-0.8-1.0-1.2-1.5-2.0(mm)		
Weight	50g-100-450g		

PT700C



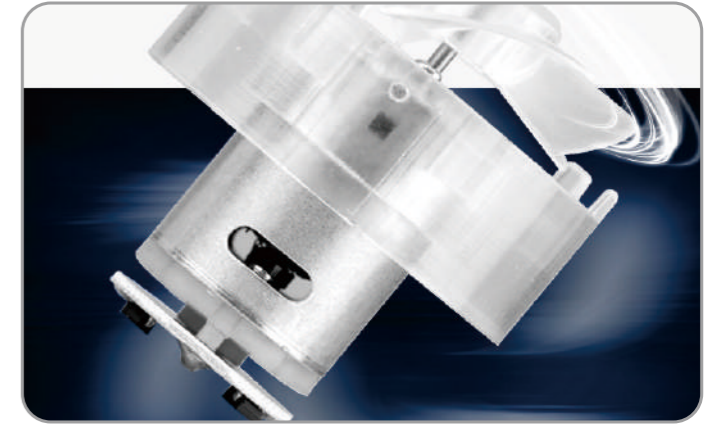
PT700D

PT750A

PRODUCT DETAILS



Two-speed wind control



High-powered copper core motor, powerful and durable



Temperature control knob, 50-550°C thermostatic adjustment



Portable hook for hanging on the wall for easy storage

PRODUCT PARAMETERS

Model	PT700C	PT700D	PT750A
Voltage	220V	220V	220V
Power	700W	700W	750W
Temperature range	50~550°C	50~550°C	60~600°C
Air flow	50-300L/min	50-300L/min	50-300L/min
Plug type	Three pin plug	Two pin plug	Two pin plug
Weight	600g	600g	600g



PRODUCT PARAMETERS

Power	Product	Glue stick	Warm up time	Gun nozzle	Applied Range
20W (small size)		7mm	1-3 minutes	Aluminum	Small glue gun is suitable for DIY handwork, small accessories and so on
25W small size		7mm	1-3 minutes	Aluminum	Small glue gun is suitable for DIY handwork, small accessories and so on
60W big size		11mm	1-3 minutes	Aluminum	Suitable for repairing common objects, toys, pottery, etc
100W big size		11mm	1-2 minutes	Aluminum	Suitable for manual models, DIY and other creative uses
100/60W Double power		11mm	1-2 minutes	Aluminum	Suitable for manual models, DIY and other creative uses
120W Adjust temperature		11mm	1-2 minutes	Cuprum	Suitable for household wood products, glass products bonding, etc
150W Adjust temperature		11mm	1-2 minutes	Cuprum	Suitable for household wood products, glass products bonding, etc

PRODUCT DETAILS



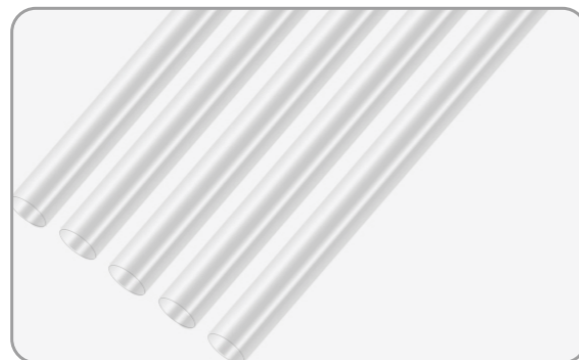
Ceramic PTC heating core



Quality Aluminum Alloy Gun Nozzle



Leakage-proof Built In Fuse



High Viscose Stick

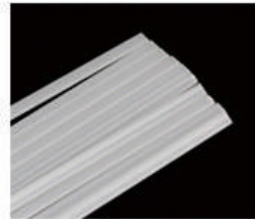
LS936H-B



Voltage: 220V
 Power: 1080W
 Temperature: 50°C-580°C
 Air flow: 50-490L/min



Heating Core *2



Welding rod *10



Y triangle * 1



Locating nozzle *1



Y round nozzle *1



PRODUCT ANALYSIS

PRODUCT ANALYSIS

Further understand the product, convenient operation, high efficiency



PRODUCT INFORMATION

MODEL	PT1080C	TYPE	SPLIT TYPE
VOLTAGE	220V	POWER	1080W±10%
TEMPERATURE RANGE	50~580°C	TEMPERATURE REGULATION	9TH GEAR
AIR FLOW	50~490L/min	WEIGHT	1.25kg

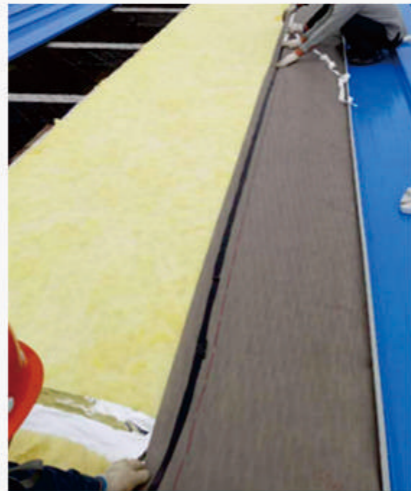
Scope of use

WELDING VARIOUS TYPES OF PLASTIC

It can be widely used for PVC plastic floor construction, waterproof membrane engineering construction, automotive bumper repair water heating pipe repair, water tank/sink production, etc.



PVC Plastic Floor Construction



Construction of waterproof membrane engineering



Automotive Bumper Repair



Water Heating Pipe Repair



Sink/Water Tank Production



Plastic Products Repair



1. Press down the rear cover of the heating core and rotate it to eject the rear cover



2. Tighten the screws for developing the hot core wire



3. Turn the plastic screw at the air duct mouth and pull out the two wires connecting the heating core



4. Push out the heating core with a screwdriver and replace it with a new one

Packaging Accessories





SPECIFICATIONS

Technical Data						
Manufacturer	ZB					
Model	ZB-XG201	ZB-B3	ZB-B4	ZB-SR901	ZB-SR902	ZB-SR903
Color	Silver			Black		
Product Specification	130*67mm	68*86mm		70*160mm	68*160mm	70mm*160mm
Material	Metal			Bakelite	Metal	Bakelite

PRODUCT DISPLAY

6 Model Of Soldering Iron Holder



ZB-XG201



ZB-B3



ZB-B4



ZB-SR901



ZB-SR902



ZB-SR903

HARDWARE DETAIL

For Electric Screwdriver

Soldering Iron Stand Holder: metal and Bakelite material, beautiful appearance, high temperature resistance, long service life. Solid and stable base design, heavy duty chassis, can store sponge, easy cleaning. It is a good helper for welding. This helps keep your work space clean and tidy!



Metal Material

High quality metal material, high temperature resistance, long service life.



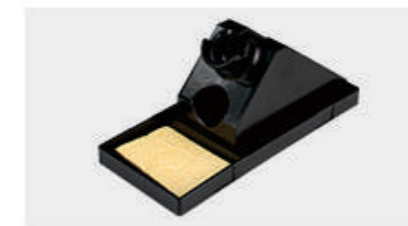
Solid Chassis

The solid and stable base design prevents the soldering iron from sliding when you extract and store it.



Delicate Design

Ingenious design, easy to disassemble storage, suitable for collocation with soldering iron.



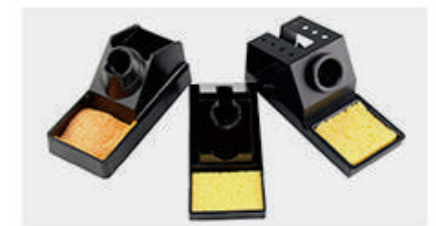
Multi-Function Bracket

Can place soldering iron, cleaning sponge, built-in small round hole, can place small tools.



Bakelite Material

Casting process integrity is strong, shock resistant, not easy to deformation.



Many Models

A variety of models and specifications are available to meet your various needs.



PRODUCT DETAILS



Prevents oxidation of the soldering iron tip and increases service life



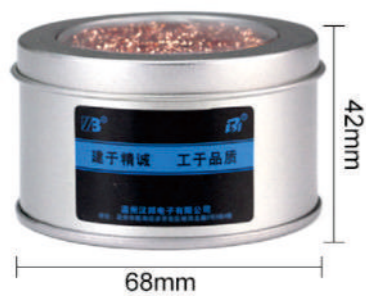
Simple and compact housing design drop resistant and durable



SC-599B 黑色



SC-599G 金色



灰色铁盒款



铜丝球



The steel wire has moderate hardness and does not hurt the iron head

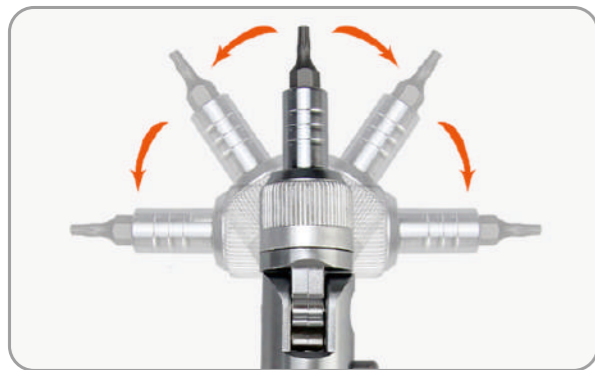


2880A

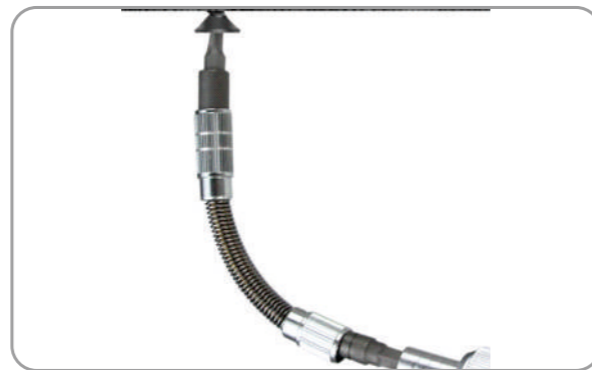


2880B

PRODUCT DETAILS



180 ° arbitrary rotation, suitable for a variety of small spaces



Universal bending rod, removable screws at any angle



Forward and reverse adjustment



ABS plastic packaging, strong and durable

Product Size



DC voltage

range	Resolution	Accuracy
200mV	100μV	±(0.5%+2)
2V	1mV	
20V	10mV	
200V	100mV	
1000V	1V	±(1.2%+5)

DC current

range	Resolution	Accuracy
2mA	1μA	±(1.2%+2)
20mA	10μA	
20mA	100μA	±(1.4%+2)
20A	10mA	±(2.0%+2)

AC voltages

range	Resolution	Accuracy
200mV	100μV	±(1.2%+3)
2V	1mV	
20V	10mV	
200V	100mV	
700V	1V	±(1.2%+3)

Resistors

range	Resolution	Accuracy
200Ω	0.1Ω	±(1.0%+2)
2kΩ	1Ω	
20kΩ	10Ω	±(0.8%+2)
200kΩ	100Ω	±(1.2%+2)
20MΩ	1kΩ	±(1.2%+2)
200MΩ	100kΩ	±(5.0%+10)

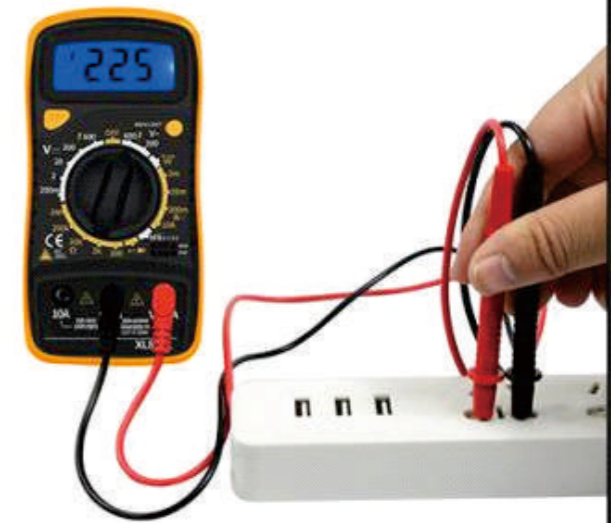
Functional Measurement Display



Measuring DC voltages

Common household AC voltage is 220V or more

Measuring AC voltage



Connect the product as shown in the diagram to measure the current when the product is in operation

Measuring DC currents





DT9205P-S



DT9205A



Function Introduction

DT9205A

DCV	0-1000V
DCA	0-20A
ACV	0-750V
ACA	0-20A
Resistance	0-200MΩ
capacitance	0-200uF
Max. Display	1999
Buzzer	✓
Automatic off	✓
Burn prevention	✓
Diode Test	DC A about 1mA DCV about 3V
Triode Test	Base current 10uA Vce about 3V



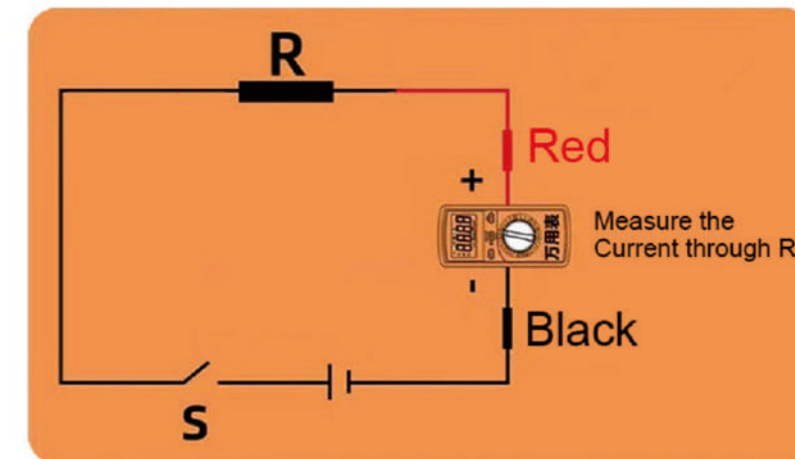
DT9205P-S



DCV	0-1000V
DCA	0-20A
ACV	0-750V
ACA	0-20A
Resistance	0-200MΩ
capacitance	0-200uF
Max. Display	1999
Buzzer	✓
Automatic off	✓
Burn prevention	✓
Data Retention	✓
Backlight Display	✓
Diode Test	DC A about 1mA DCV about 3V
Triode Test	Base current 10uA Vce about 3V

Warm Tips

Beginners pay attention to the way to measure the current to avoid misuse



! Multimeter measurement current must be connected to the circuit in series



PRODUCT DETAILS



Hot-dip galvanized steel wire rope



Anti-crash cushioning rubber

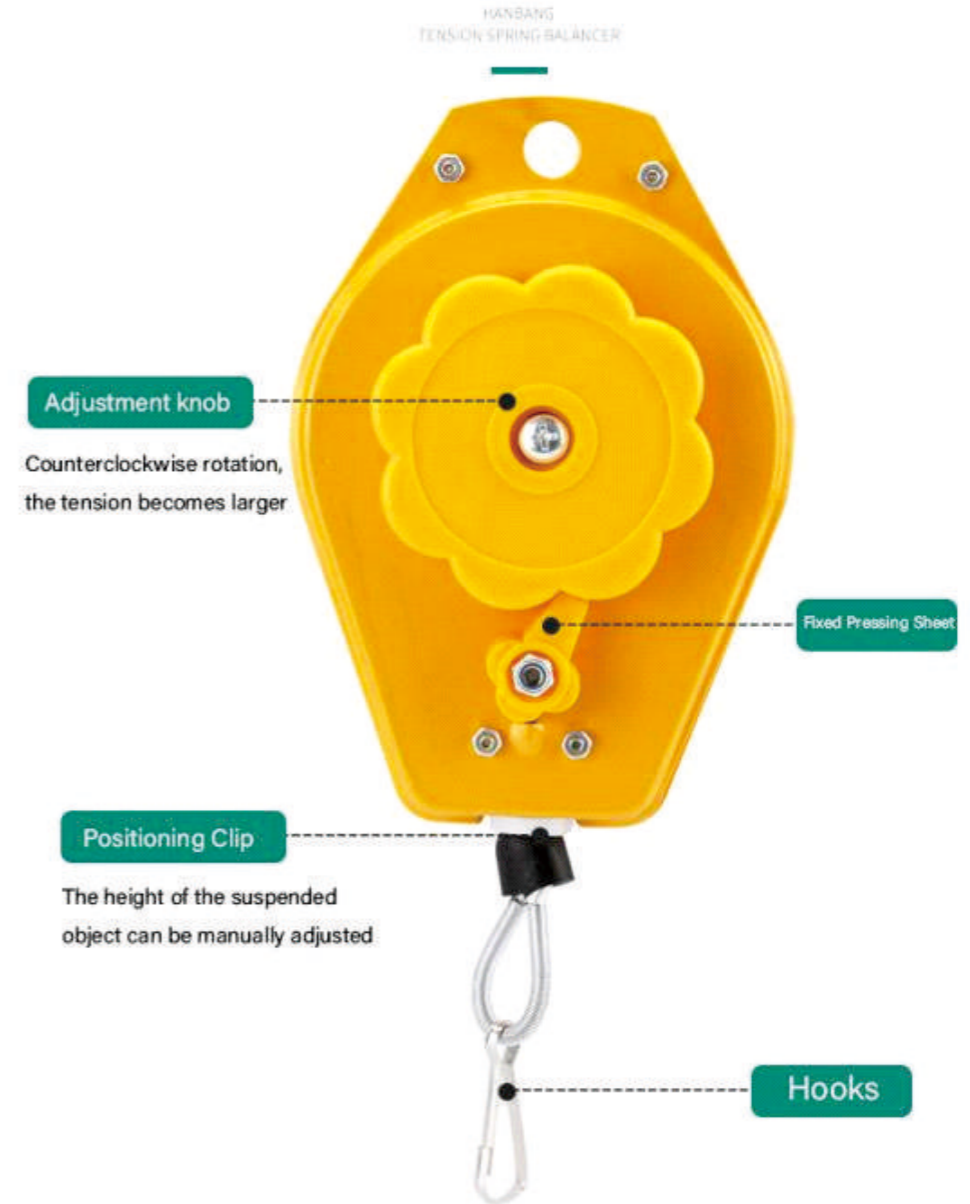


With safety device, more secure



Tension adjustment knob

Balancer specification parameters



Model	Loadable weight	Steel Wire Length	Shrinkage Length
SBA-15	0.5-1.5kg	1.3m	1.3m
SBA-20	0.6-2.0kg	1.3m	1.3m
SBA-30	1.5-3.0kg	1.3m	1.3m
SBA-50	3.0-5.0kg	1.3m	1.3m
SBA-15-3M	0.5-1.5kg	3m	1.3m
SBA-20-3M	0.6-2.0kg	3m	1.3m
SBA-30-3M	1.5-3.0kg	3m	1.3m
SBA-50-3M	3.0-5.0kg	3m	1.3m

Special specifications can be customized, contact customer service for details



PRODUCT DETAILS



Steel wire rope Robust and durable to cushion impact in unexpected situation



With safety device, more secure



Weighing metal hook, hard material, can be used with confidence

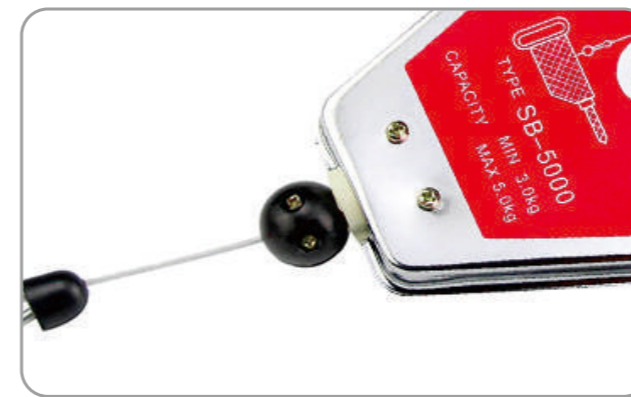
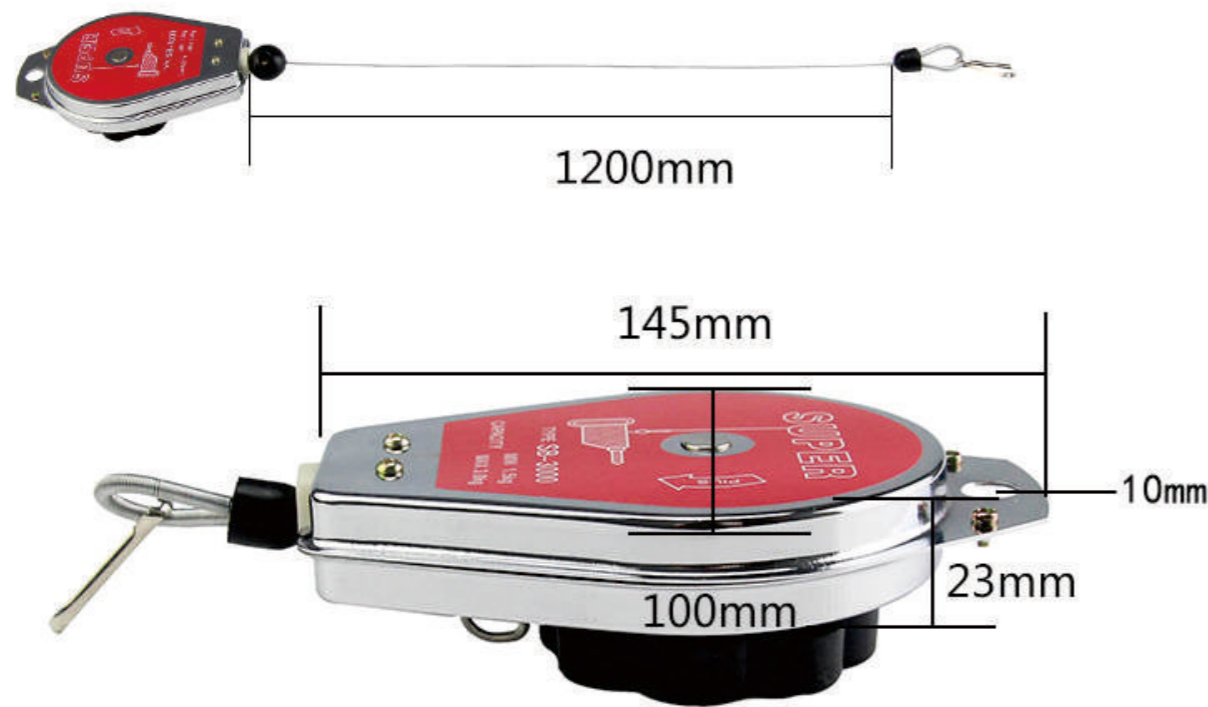


Tension adjustment knob

Model	Load-bearing		Retractable length
	kgs	lbs	
SBD-12	0.5-1.2kg	1.1-2.6	2.0M
SBD-20	0.6-2.0kg	2.2-4.4	
SBD-30	0.6-3.0kg	4.4-6.6	
SB2.0	1.0-2.0kg	2.2-4.4	



PRODUCT DETAILS



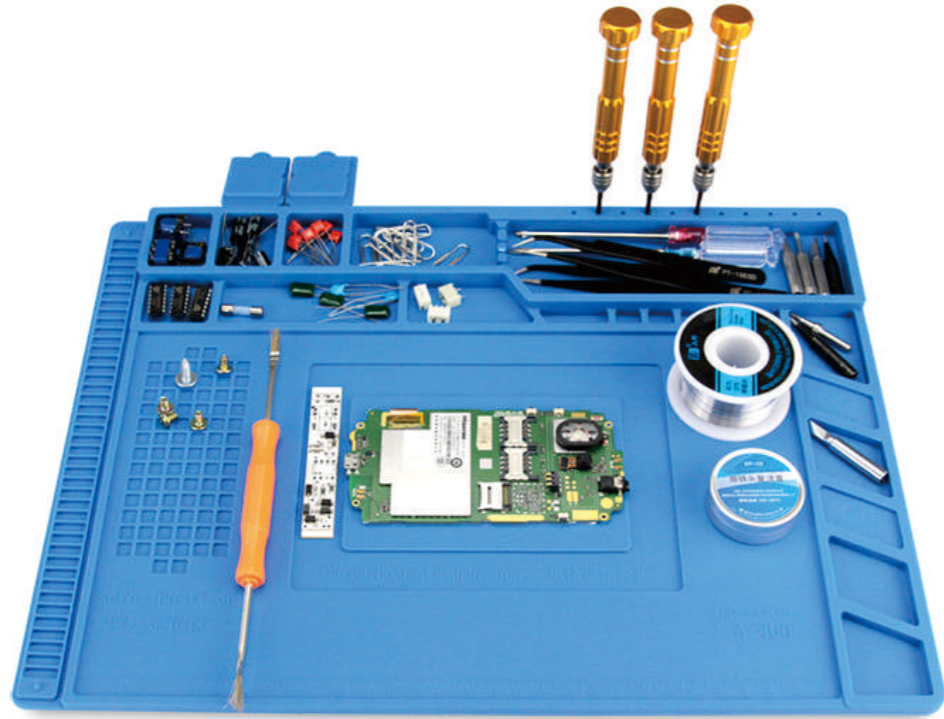
With safety device, more secure



Wide range of applications, with a variety of models available

Model	SB-1200	SB-2000	SB-3000	SB-5000
Load-bearing	0.5-1.5kg	0.6-2.0kg	1.5-3.0kg	3.0-5.0kg
Retractable length	1.2m			

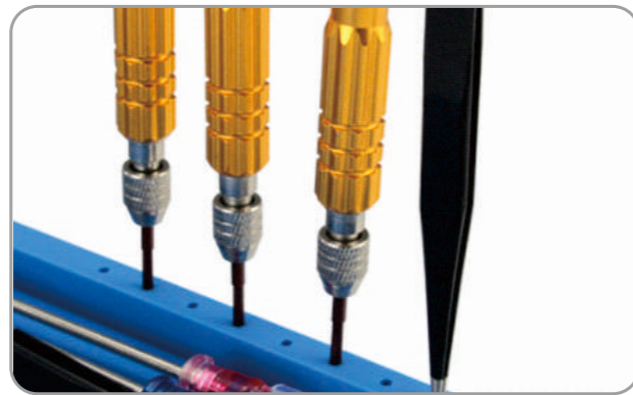




PRODUCT DETAILS



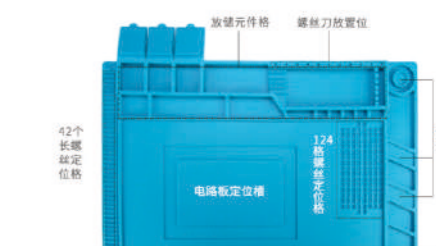
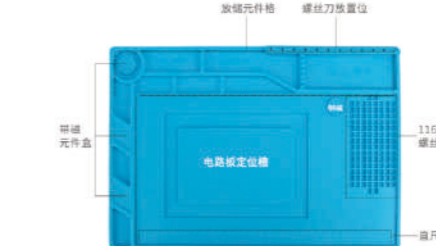
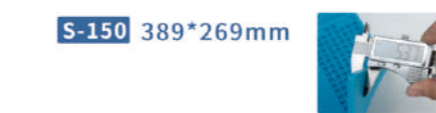
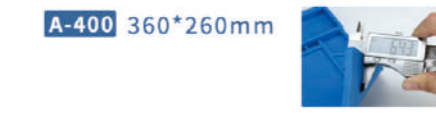
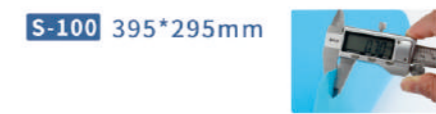
Component box with lid
Storage of chips, screws, etc.,
anti-lost and dustproof



Screwdriver placement hole
Can place screwdrivers, sharp soldering
iron tips, etc., saving space



Magnetic Screw Storage
Magnetic adsorption grid to avoid dropping parts





PRODUCT PARAMETERS



PRODUCT DETAILS



Built-in 8 LED fill light



Microscope lens protection cover



1000X focus for one-hand operation



Adjustable up and down bracket



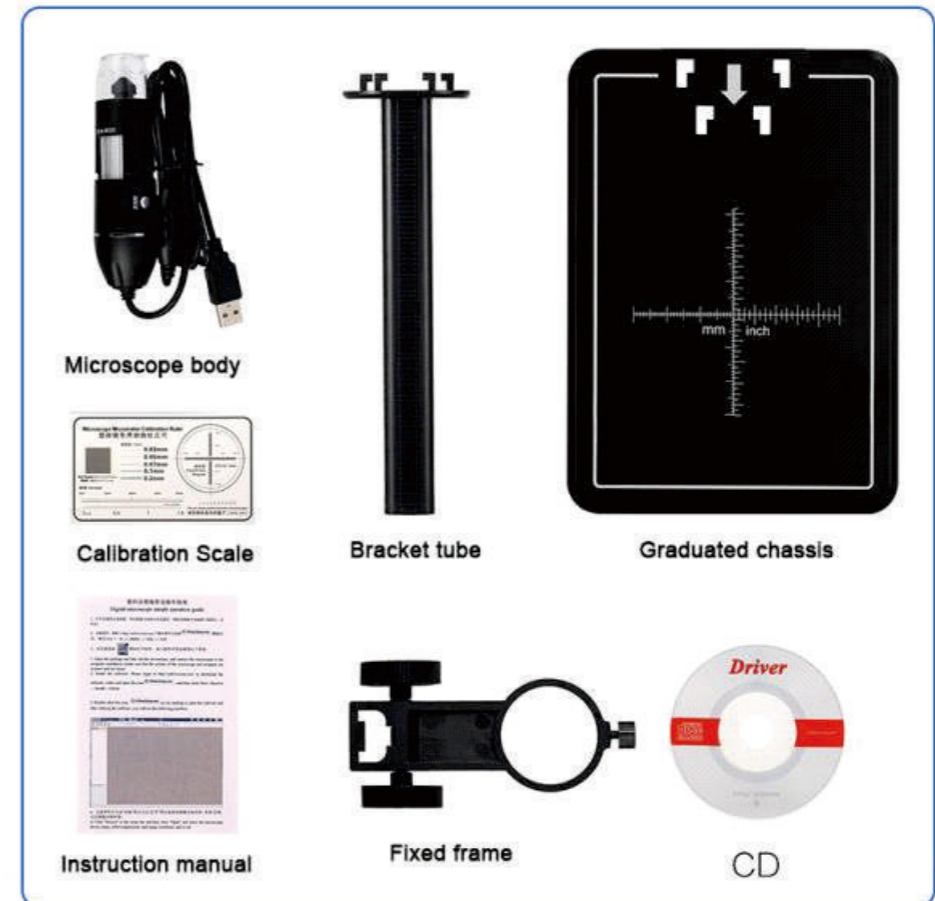
The base comes with a metal clip and a dimensional measuring tool

Product Name	DM3/DM4
Video maximum pixels	DM3: 1920*1080 DM4: 720P
Lens optical size	DM3: 1/4" DM4: 1/6.5"
Data Format	JPG/AVI
Focusing mode	Manual
Image format	DM3: JPG DM4: JPG/BMP
Magnification	DM3: 1000 DM4: 500/1000
Light source	8 LED Lights
Focusing range	DM3: 0"40mm DM4: 10"40mm
PC resolution, transfer speed	1280*720/26FPS
PC Operating System	Windows xp, win7, win8.1, win10, Mac OS x 10.5
Language	12 Languages
Lens structure	2G+IR
Aperture	F4.5
Camera view	16°
Operating temperature	-20° C ~ +60° C
Operating humidity	30%~85%Rh
Operating current	330mA
Power consumption	DM3: 1.83W DM4: 1.65W

- 500X
- 1000X
- 1600X

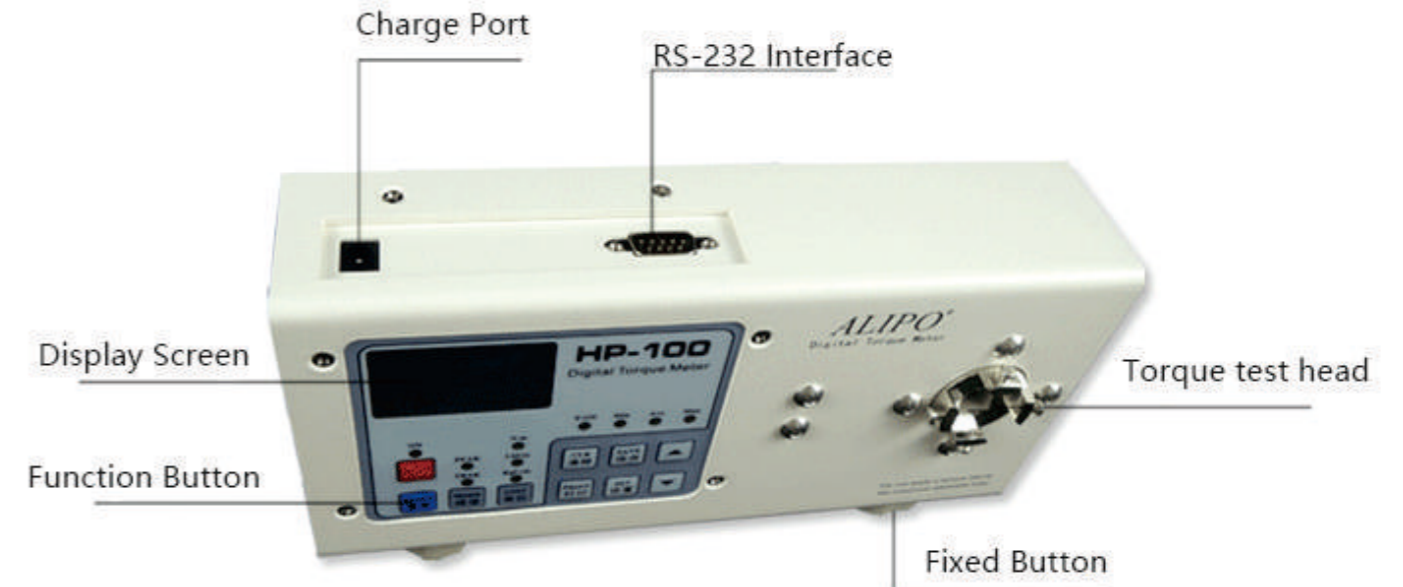


Key Description





Function Introduction



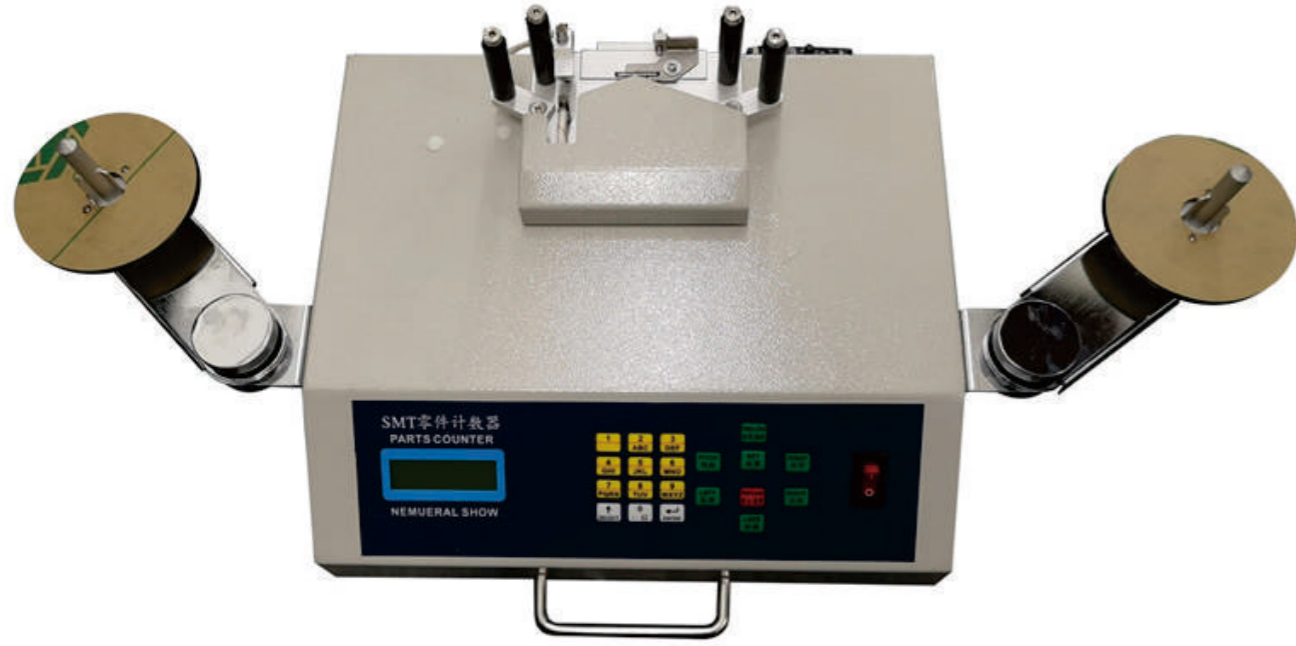
Product Parameters

CAN EASILY ADJUST THE SIZE OF THE WATER PRESSURE AND GRIP STRENGTH, SO THAT MORE EASILY

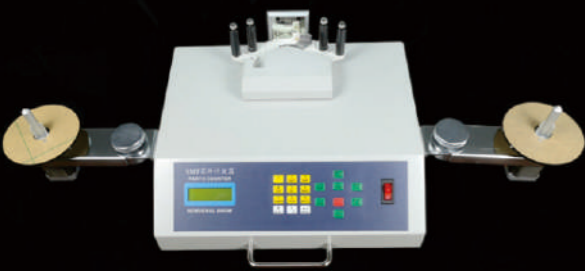
Model	HP-10	HP-20	HP-50	HP-100	HP-250	HP-500
kgf. cm	0.05~10.00	0.5~20.0	0.5~50.0	0.5~100.0	5~250	5~500
N.m	0.004~1.000	0.04~2.00	0.04~5.00	0.04~10.00	0.4~25.0	0.4~50.0
lbf. in	0.04~9.00	0.4~18.0	0.4~45.0	0.4~90.0	5~225	5~450
Precision	±0.5%FS				±1.0%FS	
Power supply	High capacity lithium battery					
Speed	1000HZ					
Size/Weight	W×H×D 230mm×50mm×110mm 2Kg					

Button Introduction






YS-801E(Standard Model)



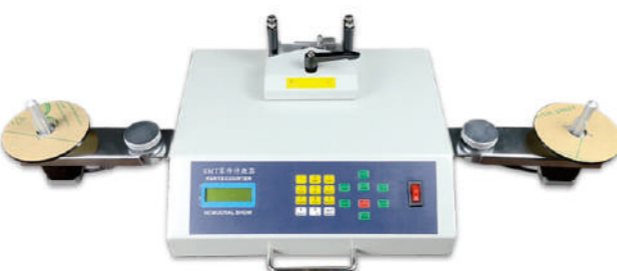
Power	30W	Voltage	AC220V/110V
Speed	Three-stage speed control	Count Quantity	-99999~99999 pcs
Size	L750*W340*H190mm	Weight	10kg

YS-802E(Standard Side Leak Model)




Power	30W	Voltage	AC220V/110V
Speed	Three-stage speed control	Count Quantity	-99999~99999 pcs
Size	L750*W340*H190mm	Weight	10kg

YS-801(Enhanced Model)




Power	30W	Voltage	AC220V/110V
Speed	Three-stage speed control	Count Quantity	-99999~99999 pcs
Size	L750*W340*H190mm	Weight	10kg

YS-801(Enhanced Side Leak Model)




Power	30W	Voltage	AC220V/110V
Speed	Three-stage speed control	Count Quantity	-99999~99999 pcs
Size	L750*W340*H190mm	Weight	10kg

YS-801SJ(Upgrade Model)




Power	30W	Voltage	AC220V/110V
Speed	Three-stage speed control	Count Quantity	-99999~99999 pcs
Size	L750*W340*H190mm	Weight	11kg

YS-802SJ(Upgrade Side Leak Model)



Power	30W	Voltage	AC220V/110V
Speed	Three-stage speed control	Count Quantity	-99999~99999 pcs
Size	L750*W340*H190mm	Weight	11kg

YS-IH881(Intelligent Model)



Power	80W	Voltage	AC220V/110V
Speed	Eight-stage speed control	Count Quantity	-16777216~16777216 pcs
Size	L730*W230*H270mm	Weight	11kg

YS-IH881(Intelligent Model)



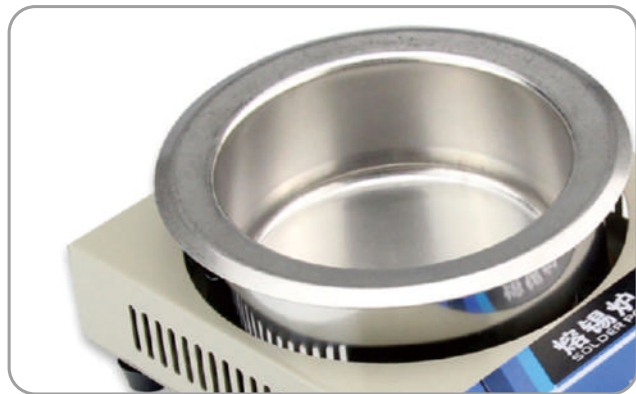
Power	80W	Voltage	AC220V/110V
Speed	Eight-stage speed control	Count Quantity	-16777216~16777216 pcs
Size	L730*W230*H270mm	Weight	11kg



Normal and lead-free type have the same size and specifications, only the material is different



PRODUCT DETAILS



C series stainless steel models, Stainless steel material, suitable for melting leaded solder, not for melting lead-free solder, 4 sizes available



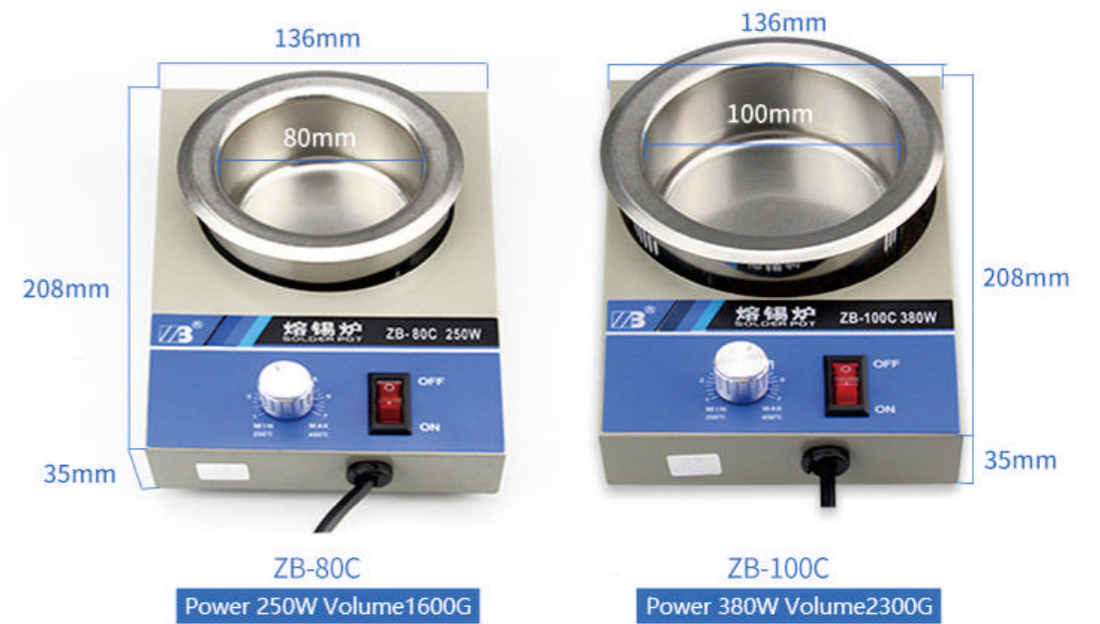
D series lead-free models, environmentally friendly titanium alloy, high corrosion resistance, suitable for melting lead-free solder, also can be used for melting leaded solder, 4 sizes available



Temperature adjustment knob, you can adjust the temperature you need at will



Heat dissipation holes, hollow heat dissipation design, effective heat dissipation, extend the service life



Model	ZB38C/ZB38D	ZB50C/ZB50D	ZB80C/ZB80D	ZB100C/ZB100D
Power	150W	200W	250W	380W
Tin Pot Size	Φ38MM	Φ50MM	Φ80MM	Φ100MM
Tin pot depth	30MM	30MM	40MM	40MM
Volume	300g	500g	1600g	2300g
Weight	0.6KG	0.7KG	0.9KG	1.1KG



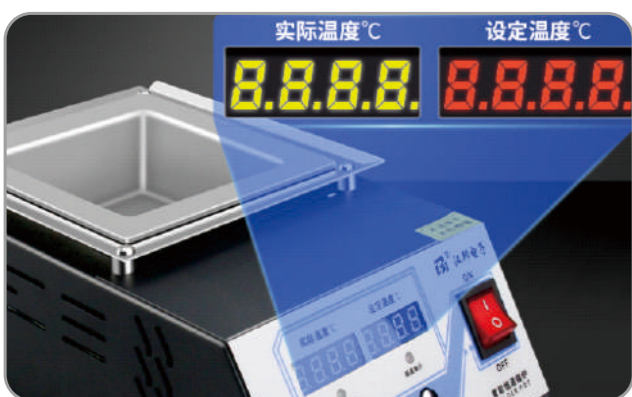
PRODUCT DETAILS



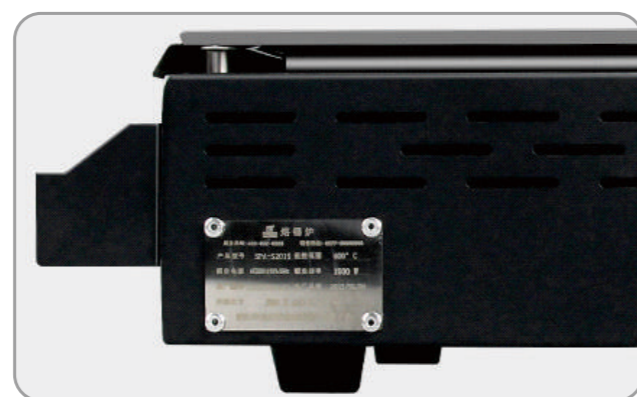
S series stainless steel models Stainless steel material, suitable for melting leaded solder, not for melting lead-free solder 7 sizes available



T series lead-free models, environmentally friendly titanium alloy, high corrosion resistance, suitable for melting lead-free solder, also can be used for melting leaded solder, 7 sizes available



LED intelligent display showing actual temperature and set temperature respectively



Heat dissipation holes, hollow heat dissipation design, effective heat dissipation, extend the service life

SPA-S Ordinary type(stainless steel)

Model	SPA-S66	SPA-S1010	SPA-S1510	SPA-S2015	SPA-S2520	SPA-S3025	SPA-S3530
Solder furnace bath size (mm)	60×60×45	100×100×45	150×100×45	200×150×45	250×200×45	300×250×45	350×300×45
Volume	1.2kg	3.3kg	4.9kg	9.8kg	16.4kg	24.6kg	34.4kg
Power	400W	700W	900W	1500W	1800W	2200W	2600W
Size	170×314×113	170×314×113	190×394×113	240×444×113	290×494×113	340×544×113	390×594×113
Weight	2.2kg	2.5kg	3.8kg	6kg	8kg	10kg	13kg
Voltage	AC220V±10% 50HZ						
Temperature control	-400°C						

SPA-T Lead-free type (titanium alloy)

Model	SPA-T66	SPA-T1010	SPA-T1510	SPA-T2015	SPA-T2520	SPA-T3025	SPA-T3530
Solder furnace bath size (mm)	60×60×45	100×100×45	150×100×45	200×150×45	250×200×45	300×250×45	350×300×45
Volume	1.2kg	3.3kg	4.9kg	9.8kg	16.4kg	24.6kg	34.4kg
Power	400W	700W	900W	1500W	1800W	2200W	2600W
Size	170×314×113	170×314×113	190×394×113	240×444×113	290×494×113	340×544×113	390×594×113
Weight	2.1kg	2.2kg	3.5kg	5.5kg	7.2kg	9.1kg	12kg
Voltage	AC220V±10% 50HZ						
Temperature control	-600°C						